



# Séries U3-CMOS

---

*Nouvelles*

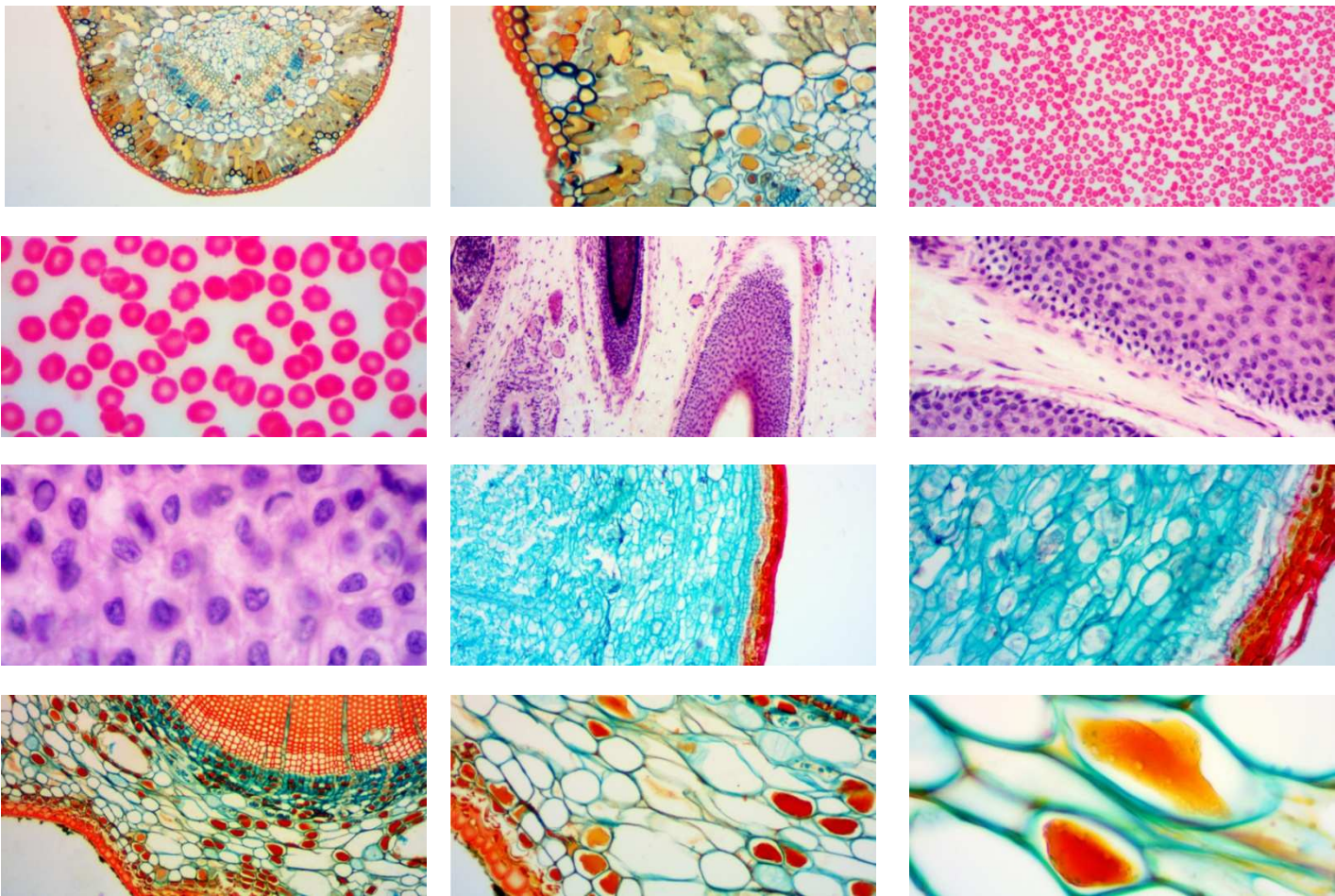
*Caméras Numériques USB3*

*Ultra rapides*



U3CMOS Camera

Cette nouvelle série de caméras pour la microscopie est adaptée à un grand nombre d'applications.



Industry leading sensors  
High quality image



The complex block features a light gray background. On the left, there is a decorative image of a dandelion seed head with seeds blowing away. In the center, the text "Industry leading sensors" and "High quality image" is displayed in a gold-colored font. On the right, there is a photograph of a white and black microscope with a camera lens attached to the top.

# Fabrications et contrôles en salles blanches

---



Toutes nos caméras sont compatibles  
Microsoft® Windows® XP / Vista / 7 (32 & 64 bit)

---

OS X (MAC OS X)

Linux (Kernel 2.6 ou Supérieur)

---



Nouvelle génération de capteur scientifique SCMOS qui combine les avantages des technologies des capteurs CCD dernière génération et des capteurs CMOS ce qui se traduit par une qualité d'image et des performances inégalées.

---

## U3-CMOS 10 Mega Pixels

HARDWARE CONFIGURATION	
Image Pickup Device	APTINA MT9J003 CMOS Sensor(Color)
Scan Mode	Progressive
Max. Resolution	3584 x 2748 (Approx. 10,000,000 Pixels)
Sensor Size (Diagonal)	1/2.2" (6.119mm(H) x 4.589mm(V), Diagonal 7.649mm)
Pixel Size	1.67μm x 1.67μm
G Sensitivity	0.31v/lux-sec(550nm)
Dynamic Range	65.2dB
A/D Converter	12-bit Parallel, 8-bit R.G.B to PC
SN Ratio	34dB
Spectral Range	380-650nm (with IR-filter)
Video Format & Frame Rate	7.2fps @3584 x 2746, 25fps @1792 x 1372 (Multiple Speed Level)
Binning	1 x 1, 2 x 2, 4 x 4
Exposure	0.38~2000ms, ROI Auto & Manual
White balance	ROI White Balance/ Manual Temp-Tint Adjustment
Color Rendering Technique	Ultra Fine Color Engine
Peak Quantum Efficiency	NA
Readout Noise	N/A
Extinction Ratio	N/A
Smear	N/A
Capture/Control API	Native C/C++, C#, Directshow, Twain, Labview
Recording System	Still Picture and Movie
Cooling System*	Natural
OPERATING ENVIRONMENT	
Operating Temperature	-10°C~ 50°C
Storage Temperature	-20°C~ 60°C
Operating Humidity	30~80%RH
Storage Humidity	10~60%RH
Power Supply	DC 5V over PC USB Port
SOFTWARE ENVIRONMENT	
Operating System	Support Microsoft Windows XP / Vista / 7 / 8 (32 & 64 bit) OS X (Mac OS X), Linux
PC Requirements	CPU: Equal to Intel Core2 2.8GHz or Higher
	Memory: 2GB or More
	USB port: USB High-speed Port
	Display: 17" or Larger CD-ROM

## U3-CMOS 14 Mega Pixels

HARDWARE CONFIGURATION	
Image Pickup Device	Aptina MT9F002 CMOS (Color)
Scan Mode	Progressive
Max. Resolution	4096 x 3288 (Approx. 14,000,000 Pixels)
Sensor Size (Diagonal)	1/2.3" (6.138mm(H) x 4.603mm(V), Diagonal 7.672mm)
Pixel Size	1.4μm x 1.4μm
G Sensitivity	0.724v/lux-sec(550nm)
Dynamic Range	65.3dB
A/D Converter	12-bit Parallel, 8-bit R.G.B to PC
SN Ratio	35.5dB
Spectral Range	380-650nm (with IR-filter)
Video Format & Frame Rate	6.2fps @4096 x 3286, 21fps @2048 x 1644, 54fps @1024 x 822
Binning	1 x 1, 2 x 2, 4 x 4
Exposure	0.4~2000ms, ROI Auto & Manual
White balance	ROI White Balance/ Manual Temp-Tint Adjustment
Color Rendering Technique	Ultra Fine Color Engine
Peak Quantum Efficiency	NA
Readout Noise	N/A
Extinction Ratio	N/A
Smear	N/A
Capture/Control API	Native C/C++, C#, Directshow, Twain, Labview
Recording System	Still Picture and Movie
Cooling System*	Natural
OPERATING ENVIRONMENT	
Operating Temperature	-10°C~ 50°C
Storage Temperature	-20°C~ 60°C
Operating Humidity	30~80%RH
Storage Humidity	10~60%RH
Power Supply	DC 5V over PC USB Port
SOFTWARE ENVIRONMENT	
Operating System	Support Microsoft Windows XP / Vista / 7 / 8 (32 & 64 bit) OS X (Mac OS X), Linux
PC Requirements	CPU: Equal to Intel Core2 2.8GHz or Higher
	Memory: 2GB or More
	USB port: USB High-speed Port
	Display: 17" or Larger CD-ROM

## U3-CMOS 18 Mega Pixels

HARDWARE CONFIGURATION	
Image Pickup Device	Aptina MT9F002 CMOS (Color)
Scan Mode	Progressive
Max. Resolution	4096 x 3288 (Approx. 14,000,000 Pixels)
Sensor Size (Diagonal)	1/2.3" (6.14mm(H) x 4.605mm(V), Diagonal 7.672mm)
Pixel Size	1.4μm x 1.4μm
G Sensitivity	0.724v/lux-sec(550nm)
Dynamic Range	65.3dB
A/D Converter	12-bit Parallel, 8-bit R.G.B to PC
SN Ratio	35.5dB
Spectral Range	380-650nm (with IR-filter)
Video Format & Frame Rate	5.6@4012 x 3684, 6.2fps @4096 x 3286, 21fps @2048 x 1644, 54fps @1024 x 822
Binning	1 x 1, 2 x 2, 4 x 4
Exposure	0.4~2000ms, ROI Auto & Manual
White balance	ROI White Balance/ Manual Temp-Tint Adjustment
Color Rendering Technique	Ultra Fine Color Engine
Peak Quantum Efficiency	NA
Readout Noise	N/A
Extinction Ratio	N/A
Smear	N/A
Capture/Control API	Native C/C++, C#, Directshow, Twain, Labview
Recording System	Still Picture and Movie
Cooling System*	Natural
OPERATING ENVIRONMENT	
Operating Temperature	-10°C~ 50°C
Storage Temperature	-20°C~ 60°C
Operating Humidity	30~80%RH
Storage Humidity	10~60%RH
Power Supply	DC 5V over PC USB Port
SOFTWARE ENVIRONMENT	
Operating System	Support Microsoft Windows XP / Vista / 7 / 8 (32 & 64 bit) OS X (Mac OS X), Linux
PC Requirements	CPU: Equal to Intel Core2 2.8GHz or Higher
	Memory: 2GB or More
	USB port: USB High-speed Port
	Display: 17" or Larger CD-ROM

