

The background of the entire page is a microscopic image of green plant cells, likely from a leaf or stem, showing various cellular structures and chloroplasts. The cells are elongated and arranged in a somewhat regular pattern, with some showing distinct cell walls and internal organelles. The color is a vibrant green, and the lighting highlights the texture and structure of the cells.

REALUX

FRANCE

- **Microscopie et Stéréomicroscopes**
- **Caméras Numériques, tablettes**
- **Eclairages**
- **Accessoires**

SAS COFEMO

**MICROSCOPIE ET
IMAGERIE**



La société COFEMO est une entreprise française spécialisée dans la vente de microscope et de solutions numériques, caméras et imagerie.

Cofemo a déposé la marque REALUX France qui est devenue une référence incontournable dans le domaine de l'instrumentation scientifique.

Tous nos produits ont été soigneusement sélectionnés pour leur qualité et leur fiabilité.

Notre réseau de distributeurs, présent en France et en Afrique a été mis en place pour la commercialisation et l'assistance auprès d'un grand nombre d'utilisateurs.

Actuellement COFEMO, propose plus d'une centaine de modèles et accessoires différents dans le but de solutionner la plupart des besoins en microscopie optique.

L'exigence de la qualité est notre maitre mot

Table des matières

Enseignement	page 4
Droits biologie	page 8
Droits recherche	page 18
Inversé biologie	page 26
Polarisants	page 30
Droits matériaux	page 34
Inversés matériaux	page 38
Caméras numériques	page 40
Adaptateurs vidéo	page 44
Tablettes numérique	page 50
Micromètres	page 52
Réticules	page 53
Stéréomicroscopes	page 54
Mono Zoom et Macro Zoom	page 64
Statifs et accessoires	page 68
Eclairages	page 81

Microscopes pour l'enseignement



B103 / B104



B203 / B204

B103, B104, B203, B204 Microscopes de biologie

Têtes : Monoculaires ou binoculaires offrant un grossissement total de 400x ou 1000x selon version

La tête inclinée à 45° est rotative sur 360°

Objectifs antifongiques RMS à 160 mm Achromatiques ou Plan Achromatiques

Mise au point macrométrique et micrométrique par commande coaxiale

Oculaires 23,2 mm

Condenseurs avec diaphragme iris réglables en hauteur

Tourelle pour 4 objectifs

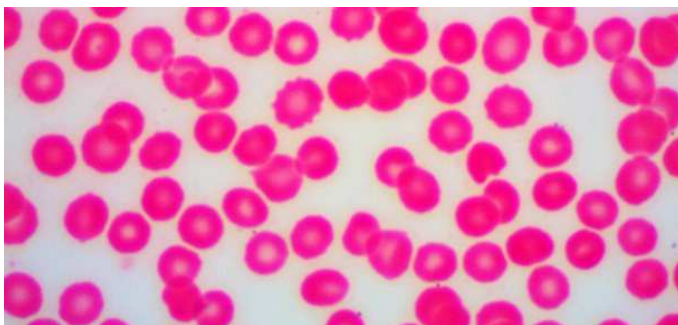
Platine :

Éclairage par 3 Watts LED 50 000 h

En option modèle Halogène ou LED avec batteries rechargeables

Références	Modèle	Objectifs	Platine
CFM-B103-LED	Microscope Monoculaire	Achromatiques 4x, 10x, 40x	Avec Valets
CFM-B104-LED	Microscope Monoculaire	Achromatiques 4x, 10x, 40x, 100x	Mécanique XY
CFM-B203 LED	Microscope Binoculaire	Achromatiques 4x, 10x, 40x, 100x	Mécanique XY
CFM-B204-LED	Microscope Binoculaire	Plan-Achromatiques 4x, 10x, 40x, 100x	Mécanique XY

WF10/18	Oculaire Grand Champ	10/18
WF10P/18	Oculaire Grand Champ	10/18 Flèche
PF10X18	Oculaire Grand Champ	10/18 Micrométrique
WF120001	Oculaire Grand Champ	12,5/14
WF160002	Oculaire Grand Champ	16/13
WF050001	Oculaire Grand Champ	5/20





Miroir



Module Fond Noir



Polarisation



Modèle monoculaire avec
Caméra-Oculaire SCMOS

Modèle trinoculaire pour
appareil photo ou caméra



Objectifs Achromatique pour B103, B104, B203, Smart1

ACH4_160	Objectif achromatique	4×/0.10
ACH10_160	Objectif achromatique	10×/0.25
ACH20_160	Objectif achromatique	20x/0.40 *
ACH40_160	Objectif achromatique	40×/0.65 (S)
ACH60_160	Objectif achromatique	60x/0.85 (S)*
ACH100_160	Objectif achromatique	100×/1.25 OIL(S)*

Objectifs Plan-Achromatique pour B204, Smart2, BK300

PLAC0001	Objectif Plan-achromatique	4×/0.10
PLAC0002	Objectif Plan-achromatique	10×/0.25
PLAC0003	Objectif Plan-achromatique	20x/0.40 *
PLAC0004	Objectif Plan-achromatique	40x/0.65
PLAC0007	Objectif Plan-achromatique	60x/0.85 (S)*
PLAC0006	Objectif Plan-achromatique	100×/1.25 OIL(S)*
PLAC100DRY	Objectif S-Plan-achromatique	100×/0.80 DRY (à sec)*
PLAC100W	Objectif S-Plan-achromatique	PLAN 100X/1.0 (à eau)*
KITPOLB	Kit de Polarisation	Analyseur + Polariseur
CFM-MO	Miroir	Miroir pour Séries B100/200
DFB100	Disque FN	Module Fond noir pour B100/200
CFM-LED_0.3W	Led 0.3W	LED de rechange pour B100/200/Smart/BK

Nouveau microscope SMART

Microscope Biologique





SMART Microscopes de biologie

Têtes : Binoculaires ou trinoculaire offrant un grossissement total de 400x ou 1000x selon version

La tête inclinée à 45° est rotative sur 360°

Objectifs antifongiques RMS à 160 mm

Achromatiques ou Plan Achromatiques

Mise au point macrométrique et micrométrique par commande coaxiale

Oculaires 23,2 mm

Condenseurs avec diaphragme iris réglables en hauteur

Tourelle pour 4 objectifs

Platine : intégrée à courroie

Éclairage par LED 3 Watts de 50 000 h

En option modèle avec batteries rechargeables

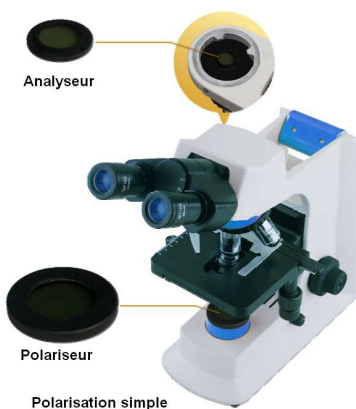
Références	Modèle	Objectifs	Platine
SMART1BLED	Binoculaire	Achromatiques 4x, 10x, 40x, 100x Oculaires 10/12	Mécanique XY
SMART1TLED	Trinoculaire	Achromatiques 4x, 10x, 40x, 100x Oculaires 10/12	Mécanique XY
SMART2BLED	Binoculaire	Plan-Achromatiques 4x, 10x, 40x, 100x Oculaires 10/20	Intégrée à courroie
SMART2TLED	Trinoculaire	Plan-Achromatiques 4x, 10x, 40x, 100x Oculaires 10/20	Intégrée à courroie
SMART3BLED	Binoculaire	Plan-Achro infinis 4x, 10x, 40x, 100x Oculaires 10/20	Intégrée à courroie
SMART3TLED	Trinoculaire	Plan-Achro infinis 4x, 10x, 40x, 100x Oculaires 10/20	Intégrée à courroie

Options et accessoires



**Kits pour contraste de phase
(pour Smart 3 uniquement)**

Monture « C » 0,5x



Objectifs Achromatique pour Smart1

ACH4_160	Objectif achromatique	4×/0.10
ACH10_160	Objectif achromatique	10×/0.25
ACH20_160 (Option)	Objectif achromatique	20x/0.40
ACH40_160	Objectif achromatique	40×/0.65 (S)*
ACH60_160 (Option)	Objectif achromatique	60x/0.85 (S)*
ACH100_160	Objectif achromatique	100×/1.25 OIL(S)*

Objectifs Plan-Achromatique pour Smart2

PLAC0001	Objectif Plan-achromatique	4×/0.10
PLAC0002	Objectif Plan-achromatique	10×/0.25
PLAC0003 (Option)	Objectif Plan-achromatique	20x/0.40
PLAC0004	Objectif Plan-achromatique	40x/0.65
PLAC0007 (Option)	Objectif Plan-achromatique	60x/0.85 (S)*
PLAC0006	Objectif Plan-achromatique	100×/1.25 OIL(S)*
PLAC100DRY (Option)	Objectif S-Plan-achromatique	100×/0.80 DRY (à sec)
PLAC100W (Option)	Objectif S-Plan-achromatique	PLAN 100X/1.0 (à eau)

Options et accessoires

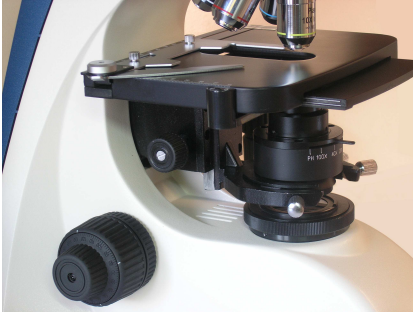


Objectifs Plan Achromatiques à l'infini pour SMART 3

IOS E4X	Objectif E-Plan-achromatique infini	4×/0.10
IOS E10	Objectif E-Plan-achromatique infini	10×/0.25
IOS E40	Objectif Plan-achromatique	40×/0.66
IOS E100	Objectif Plan-achromatique	100×/1.25
PHOT0002	Monture « C »	1x
MONT0003	Monture « C »	0.47x avec Focus ajustable
KITPOLB	Kit de Polarisation	Analyseur + Polariseur
CFM-MO-S	Miroir	Miroir
DFB100-S	Disque FN	Module Fond Noir
CFM-LED_0.3W	Led 0.3W	LED de rechange pour Smart 1 et 2
CFM-LED_3_W	Led 3W	LED de rechange pour SMART 3
KITPH007	Condenseur, glissière, lunette CT et objectif	KIT PHASE 40 en glissière /Smart3
KITPH100	Condenseur, glissière, lunette CT et objectif	KIT PHASE 100 en glissière /Smart3
KIT00008	Equipement pour Fluorescence	KIT Fluorescence LED B-G

BK 300





BK 300 Microscopes de biologie

Tête :Binoculaire ou trinoculaire offrant un grossissement total de 400x ou 1000x selon version

La tête inclinée à 30° Réglage 50 à 75 mm

Objectifs PLAN antifongiques RMS à 160 mm Plan Achromatiques

Mise au point macrométrique et micrométrique par commande coaxiale

Oculaires 23,2 mm

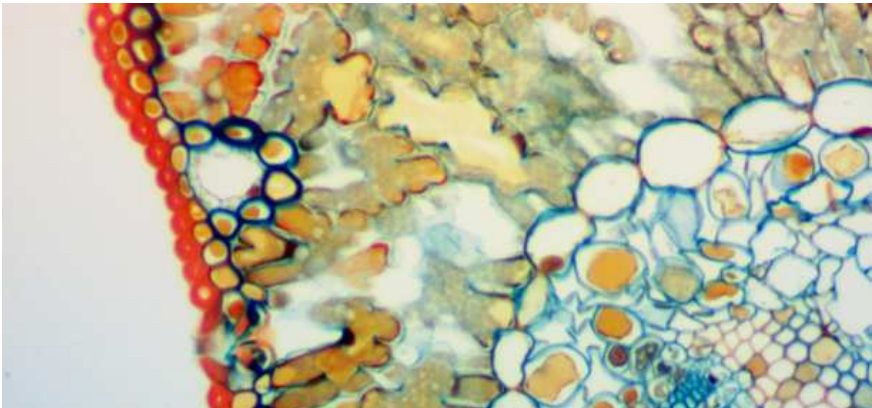
Condenseurs avec diaphragme iris réglables en hauteur

Tourelle pour 4 objectifs

Platine : 125 mm x 120 mm

Éclairage par LED 3 Watts de 50 000 h

Références	Modèle	Objectifs
CFMBK300BILED	Binoculaire	Plan-Achro 4x, 10x, 40x, 100x Oculaires 10/20
CFMBK300TRLED	Trinoculaire	Plan-Achro 4x, 10x, 40x, 100x Oculaires 10/20



Objectifs Plan Achromatiques à 160 mm

PLAC0001	Objectif Plan-achromatique	4×/0.10
PLAC0002	Objectif Plan-achromatique	10×/0.25
PLAC0003	Objectif Plan-achromatique	20×/0.40 *
PLAC0004	Objectif Plan-achromatique	40×/0.65
PLAC0007	Objectif Plan-achromatique	60×/0.85 *
PLAC0006	Objectif Plan-achromatique	100×/1.25
PHOT0007	Monture « C »	1x
MONT057F	Monture « C »	0.57x avec Focus ajustable
CONDFN	Module Fond Noir	Module Fond Noir
CFM-LED_3_W	Led 3W	LED de rechange pour SMART 3
ANT-BK	Analyseur en monture	
POL-BK	Polariseur en monture tournant sur 360°	

BK 5000





BK 5000 Microscopes de biologie

Tête : Binoculaire ou trinoculaire offrant un grossissement total de 400x ou 1000x selon version

La tête inclinée à 30°
Objectifs
 PLAN antifongiques RMS à l'infini
 Plan Achromatiques
 Mise au point macrométrique et micrométrique par commande coaxiale

Oculaires 23,2 mm

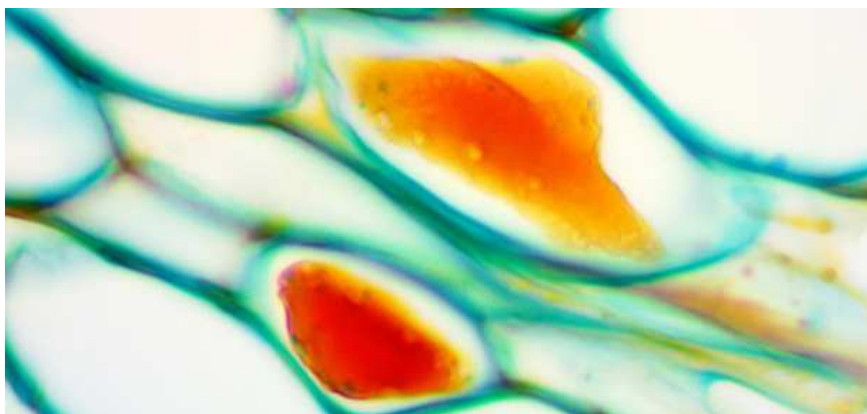
Condenseurs avec diaphragme iris réglables en hauteur

Tourelle pour 5 objectifs

Platine : 125 mm x 120 mm

Éclairage par LED 3 Watts

Références	Modèle	Objectifs
CFMBK300BILED	Binoculaire	Plan-Achro 4x, 10x, 40x, 100x Oculaires 10/20
CFMBK300TRLED	Trinoculaire	Plan-Achro 4x, 10x, 40x, 100x Oculaires 10/20



Objectifs Plan Achromatiques à l'infini

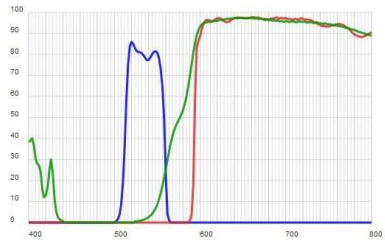
IOS2.5X00	Objectif Plan-achromatique	2,5/0.07 *
IOS4X000	Objectif Plan-achromatique	4×/0.10
IOS10X00	Objectif Plan-achromatique	10×/0.25
IOS20X00	Objectif Plan-achromatique	20x/0.40 *
IOS40X00	Objectif Plan-achromatique	40x/0.65
IOS60X00	Objectif Plan-achromatique	60x/0.80 *
IOS100X0	Objectif Plan-achromatique	100x/1.25
IOS PL100W	Objectif Plan-achromatique	100x/1.25*
PHOT0007	Monture « C »	1x
MONT057F	Monture « C »	0.57x avec Focus ajustable
KIT00006	KIT PHASE INFINI	Condenseur à tourelle
KIT00007	KIT PHASE 40	Condenseur à glissière
CONDFN	Module Fond Noir	Module Fond Noir
ANT-BK	Analyseur en monture	
POL-BK	Polariseur en monture tournant sur 360°	
CFM-LED_3_W	Led 3W	LED de rechange

Fluorescence LED

KIT00008

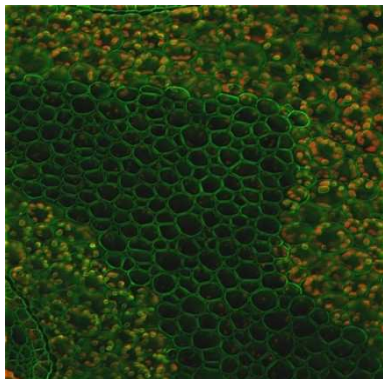
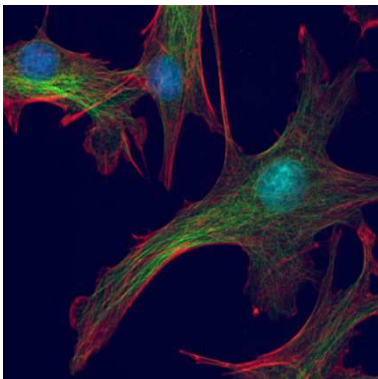
KIT FL2 LED

Filtres Bleu et vert



Cube B : excitation BP 420-480, dichroïsme DM 500, filtre d'arrêt BA 520

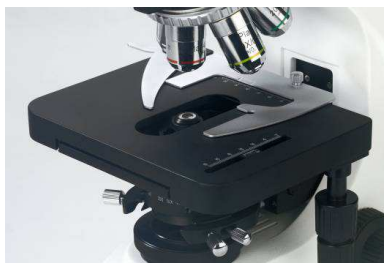
Cube G : excitation BP 510-550, dichroïsme DM 570, filtre d'arrêt BA 590



BK 6000



Oculaires Grand Champ 10/22
Platine Intégrée
Condenseur à lentille escamotable

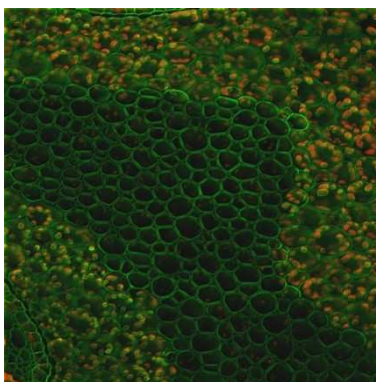
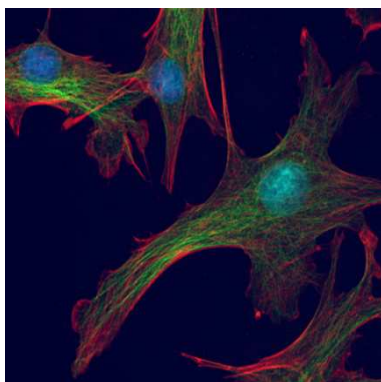


Fluorescence LED ou HBO

KIT00012

KIT FL6 LED

Jusqu'à 6 cubes



BDS 400



BDS 400 Microscope inversé de biologie

Tête :Trinoculaire offrant un grossissement total de 40 à400 selon version

La tête inclinée à 30° **Objectifs** antifongiques à l'infini Plan Achromatiques

Mise au point macrométrique et micrométrique par commande coaxiale

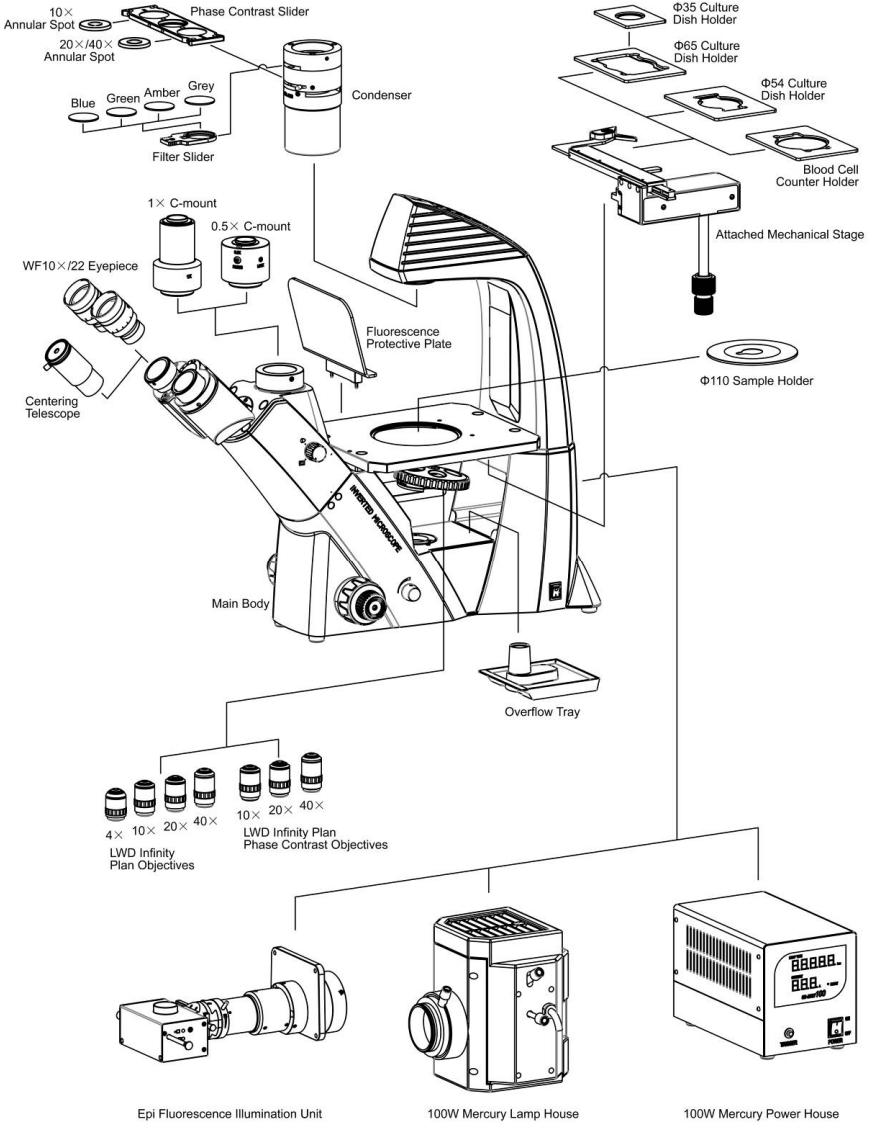
Oculaires 10/22 ou 10/23

Condenseurs LWD 72 mm avec glissières de phase 10pH, 20pH ou 40pH

Tourelle pour 5 objectifs

Références	Modèle	Objectifs	Platine
CFM-BDS400	Trinoculaire 30 Watts	4, 10Ph, 25Ph, 40Ph	Avec surplatine





POLARISANTS



B104 POL

Tête :Trinoculaire
offrants un
grossissement total de
40 à400 selon version

La tête inclinée à 30°

Objectifs PLAN
antifongiques RMS à
160 mm Plan
Achromatiques

Mise au point
macrométrique et
micrométrique par
commande coaxiale

Oculaire 10/18

Condenseurs avec 2
glissières de phase
10/25x et 40x

Tourelle pour 4
objectifs

Références	Modèle	Objectifs	Platine
CFMB104-POL	Monoculaire	4, 10, 20x et 40x	Tournante



Références	Modèle	Objectifs	Platine
SMARTPOL-BI	Binoculaire	4, 10, 20x et 40x	Tournante
SMARTPOL-TR	Trinoculaire	4, 10, 20x et 40x	Tournante

Options		
IOS60XPOL		OBJECTIF IOS POL 60/0.80
GUID004	Guide objet XY	
PHOT0002	Monture C	1x
MONT0003	Monture C	0,47x

POLARISANTS

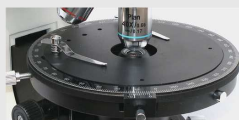
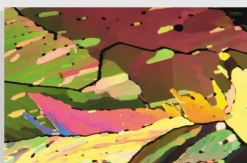


BK POL

Tête :Trinoculaire
offrants un
grossissement total de
40 à400 selon version
La tête inclinée à 30°
Objectifs PLAN
antifongiques RMS à
160 mm Plan
Achromatiques
Mise au point
macrométrique et
micrométrique par
commande coaxiale
Oculaire 10/18
Condenseurs avec 2
glissières de phase
10/25x et 40x
Tourelle pour 4
objectifs

Références	Transmission	Objectifs	Platine
CFMBKPOLBI	Binoculaire	4, 10, 20x et 40x	Tournante
CFMBKPOLTR	Trinoculaire	4, 10, 20x et 40x	Tournante

Références	Transmission / Ré- flexion	Objectifs	Platine
CFMBKPOLRB	Binoculaire	4, 10, 20x et 40x	Tournante
CFMBKPOLRT	Trinoculaire	4, 10, 20x et 40x	Tournante

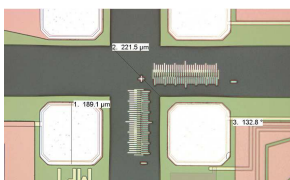
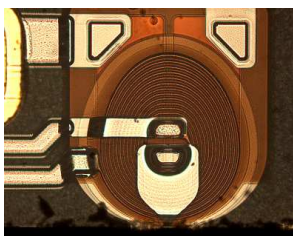


Options		
IOS2.5X00		OBJECTIF IOS PL ACH 2,5/0.07
IOS60XPOL		OBJECTIF IOS POL 60/0.80
GUID0002	Guide objet XY	
PHOT0002	Monture C	1x
MONT0003	Monture C	0,47x

MAT

Tête :Trinoculaire offrant un grossissement total de 40 à400 selon version
 La tête inclinée à 30° **Objectifs** PLAN antifongiques Infinis Plan Achromatiques
 Mise au point macrométrique et micrométrique par commande coaxiale
Oculaire 10/18
Condenseurs avec 2 glissières de phase 10/25x et 40x
Tourelle pour 4 objectifs

Références	Transmission	Objectifs	Platine
CFMMAT100BI	Binoculaire	4, 10, 20x et 40x	XY
CFMMAT200TR	Trinoculaire	5, 10, 20x et 50x	XY



Matériaux MAT 300 et MAT 500



Références	Transmission	Objectifs	Platine
CFMMAT300BI	Binoculaire	5, 10, 20x et 50x	XY
CFMMAT300TR	Trinoculaire	5, 10, 20x et 50x	XY

Références	Transmission / Réflexion	Objectifs	Platine
CFMMAT500BI	Binoculaire	5, 10, 20x et 50x	XY
CFMMAT500TR	Trinoculaire	5, 10, 20x et 50x	XY

Options MAT300 / MAT500

LPL 40X		OBJECTIF LPL40X/0.66
LPL 50X		OBJECTIF LPL50X/0.70
LPL 80X		OBJECTIF LPL80X/0.80
MONT0003	Monture C	0,47x



Matériaux Inversés



MDJ 200

Tête : Binoculaire
offrants un
grossissement total de
40 à 400 selon version

La tête inclinée à 30°

Objectifs PLAN
antifongiques RMS à
160 mm Plan
Achromatiques

Mise au point
macrométrique et
micrométrique par
commande coaxiale

Oculaire 10/18

Condenseurs avec 2
glissières de phase
10/25x et 40x

Tourelle pour 4
objectifs

Références	Transmission	Objectifs	Platine XY
MDJ00001	Binoculaire	10x et 40x	180 x 165 mm

Options		
WF100001	WF 10/20	
WF120001	WF 12.5/14	
WF050001	Huygens 5/20	
PLAC0001	Obj. Plan 4x/0.10	
PLAC0003	Obj. Plan 20/0.35	

MDS 400
Trinoculaire
Version Fond clair et
version Fond Noir



Références	Transmission	Objectifs	Platine XY
MDS400	Trinoculaire	5, 10, 20x et 50x	210 x 180 mm
MDS400D	Trinoculaire	5, 10, 20x et 50x BD	210 x 180 mm



Caméras –Oculaire SCAMOS

Caméras diamètre 23,2 mm Logiciel ToupView En Français

Livrées avec Câble USB, CD d'installation et Adaptateur pour oculaire 30 mm



Caméra –Oculaire

Caméra diamètre 23,2 mm 350 000 Pixels

Capteur 1/4 " Résolution Max 640x 480

Référence :
SCAMOS0.35



Caméra –Oculaire

Caméra diamètre 23,2 mm SCAMOS 1,3 Méga Pixels

Capteur 1/3 " Résolution Max1280x 1024

Référence :
SCAMOS1.3



Caméra –Oculaire

Caméra diamètre 23,2 mm SCAMOS 2 Méga Pixels

Capteur 1/3,2 " Résolution max1600x 1200

Référence :
SCAMOS2.0

Caméras U-CMOS USB2

Caméras à monture C

Logiciel ToupView En Français

Livrées avec Câble USB, CD d'installation

**Caméra USB2 3 MP**

Caméra 3,1 Méga Pixels

Capteur 1/2 "

Résolution Max 2048x 1536

Référence :**UCMOS3.0TKC****Caméra USB2 3 MP (Enseignement)**

Caméra 3,1 Méga Pixels

Capteur 1/2 "

Résolution Max 2048x 1536

Avec adaptateur d'oculaire 0,5x

Et adaptateur pour 30 mm

Référence :**UCMOS3.0TKF****Caméra USB2 5 MP**

Caméra 5,1 Méga Pixels

Capteur 1/2,5 "

Résolution Max 2592x 1944

Référence :**UCMOS5.0TKC**



U3CMOS Camera

Caméras U-CMOS USB3
Caméra 3,1 Méga Pixels
Capteur 1/2 "
Résolution Max 2048x 1534

Référence :
TP103100A



U3CMOS Camera

Caméras U-CMOS USB3
Caméra 5,1 Méga Pixels
Capteur 1/2.5 "
Résolution Max 2048x 1534

Référence :
UCMOS10C



U3CMOS Camera

Caméras U-CMOS USB3
Caméra 10 Méga Pixels
Capteur 1/2.3 "
Résolution Max 3584x2746

Référence :
UCMOS10C



U3CMOS Camera

Caméras U-CMOS USB3
Caméra 14 Méga Pixels
Capteur 1/2.3 "
Résolution Max 4096x3286

Référence :
UCMOS14C

**Caméra HDMI**

Caméra à monture C
 Capteur 1/2,5 "
 Résolution 1080x720
 Carte SD et télécommande

Référence :
XCAM0720PHA

**Caméra HDMI/USB2**

Caméra à monture C
 Capteur 1/2,8 "
 Résolution 1920x1080
 Carte SD, Souris, Câble USB
 ToupView

Référence :
XCAM1080PHA

**Caméra Wifi**

Caméra à monture C
 Capteur 1/2,5 "
 Résolution 1920x1080

Référence :
WCAM1080PA

**Caméras refroidies couleur 1,4 et 5MP**

Caméra à monture C
 Capteur 2/3"
 Résolution 1360x1024
 Résolution 2448x2050

Référence :
CFM01400KPB
CFM05200KPA



**Adaptateur d'oculaire
Monture C**
23,2 mm
0,5x

**Référence :
ADA00001**



**Adaptateur d'oculaire
Monture C**
23,2 mm
0,5x focus réglable

**Référence :
ADA00050**



**Adaptateur d'oculaire
Monture C**
23,2 mm
0,37x focus réglable

**Référence :
ADA00037**



Convertisseur d'oculaire
Ø 23,2 mm vers Ø 30,00 mm

**Référence :
ADA00002**

**Adaptateur OLYMPUS**

1x (UTV1x-2 + UCMAD3)

CX , BX , MX , STM , SZX , IX , GX

Référence :**U-TV1X-2/U-CAMD3****Adaptateur OLYMPUS**

0.63x (UTV1x + UCMAD)

CX , BX , MX , STM , SZX , IX , GX

Référence :**U-TV0.63XC****Adaptateur OLYMPUS**

0,5x

CX , BX , MX , STM , SZX , IX , GX

Référence :**U-TV0.5XC-3****Adaptateur OLYMPUS**

0,35x

CX , BX , MX , STM , SZX , IX , GX

Référence :**U-TV0.35XC-2**



Adaptateur Leica

1x
Pour séries DM

Référence :
11541510



Adaptateur Leica

0,70x
Pour séries DM

Référence :
11541543



Adaptateur Leica

0,55x
Pour séries DM

Référence :
11541544



Adaptateur Leica

0,35x
Pour séries DM

Référence :
11541512

**Adaptateur Nikon**

1x
 E100,E200,50i,55i,80i,90i, Ni séries,
 Ti Séries, SMZ800,SMZ1000,
 SMZ15000

Référence :
MQD42000

**Adaptateur Nikon**

0,7x
 E100,E200,50i,55i,80i,90i, Ni séries,
 Ti Séries, SMZ800,SMZ1000,
 SMZ15000

Référence :
MQD42070

**Adaptateur Nikon**

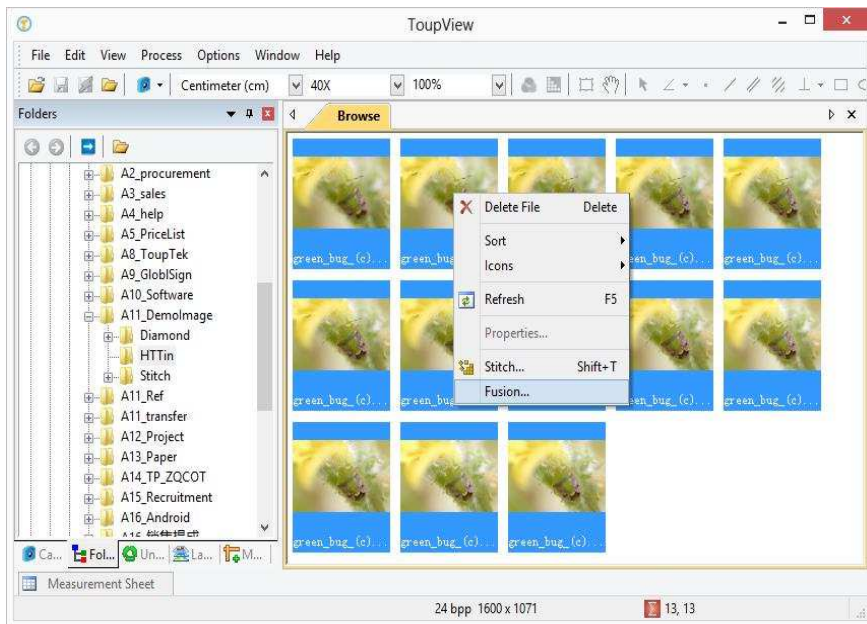
0,55x
 E100,E200,50i,55i,80i,90i, Ni séries,
 Ti Séries, SMZ800,SMZ1000,
 SMZ15000

Référence :
MQD42055

**Adaptateur Nikon**

0,35x
 E100,E200,50i,55i,80i,90i, Ni séries,
 Ti Séries, SMZ800,SMZ1000,
 SMZ15000

Référence :
MQD42035



REALPAD 6
10 pouces



Cette nouvelle caméra tablette, haute performance, très simple d'utilisation, a été spécialement conçue pour les applications en microscopie.

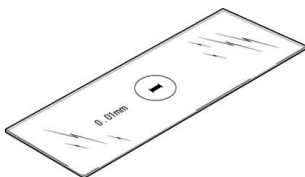
Elle est équipée d'une monture universelle « C » ce qui lui permet de s'adapter sur tous les microscopes trinoculaires.

Ecran 9.7 pouces 2048 x 1536

Capteur 5 Méga Pixels
Android 5.1

Multiples interfaces :
USB, carte SD, HDMI





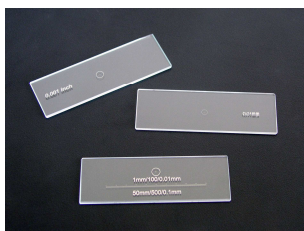
Lame d'étalonnage pour transmission

Sur un axe 1mm/100 Div.x0.01mm

Schott Optical Glass

Référence :

LAME0001



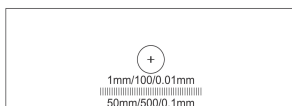
Lame d'étalonnage pour transmission

Sur deux axes 0,01mm/3 mm

Schott Optical Glass

Référence :

LAME0003



Lame d'étalonnage pour transmission

Sur un axe 0,1mm/50 mm

Schott Optical Glass

Référence :

LAME0005



Lame d'étalonnage pour matériaux

Sur un axe 1mm/100 Div.x0.01mm

Référence :

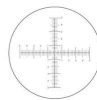
35038

RETICLE

CROSSHAIR RETICLE



CFM112101/CFM112201



CFM112102/CFM112202



CFM112103/CFM112203

P/N	Diameter (mm)	Thickness (mm)	Remarks	
CFM112101	24	1.5	X axis Crosshair Scale	10mm/100 Div.
CFM112102			Crossed Scale	12mm/120 Div.
CFM112201			X axis Crosshair Scale	10mm/100 Div.
CFM112202	20	1.5	Crossed Scale	10mm/100 Div.
CFM112103	24		1.5	Crosshair
CFM112203	20			

CROSSHAIR RETICLE

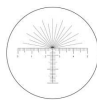
P/N	Diameter (mm)	Thickness (mm)	Remarks
CFM112104	24	1.5	Net Grid 10×10mm / 10×10mm
CFM112204	20		



CFM112104/CFM112204

MA112105 MULTI-SCALE

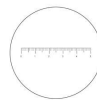
P/N	Diameter (mm)	Thickness (mm)	Remarks
CFM112105	24	1.5	Linear Scales 10mm/100/0.5mm 0-180° /10° Half Protractor



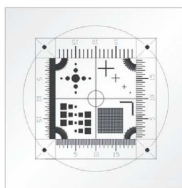
CFM112105

SCALED RETICLE

P/N	Diameter (mm)	Thickness (mm)	Remarks
CFM112301	18	1.2	Straight Line 5mm/100 Div.
CFM112302			Single Line 10mm/200 Div.



CFM112301/CFM112302



CFM751309 MULTI-FUNCTION SCALE MICROMETER

Stéréomicroscopes :



Séréomicroscope série 5 C
Grossissement 20x et 40x
Avec oculaires 10/20
Double Eclairage par LED
Sur secteur et batteries rechargeables



Frédéric LABAINE

**CFM-F13 et CFM-B24**

Grossissement 1/3 ou 2/4

Inclinée 45° WD : 100 mm

Avec oculaires 10/20 en standard

Oculaires en option ; 10x, 15x, 20x,
25x et 30x

Réglage +/- 5 sur porte oculaire gauche

Objectif auxiliaires possibles

**Références**

CFM-F13

Binoculaire tourelle 1x/3x

CFM-F24

Binoculaire tourelle 1x/4x

Exemples d'utilisations



Stéréomicroscopes à Zoom



SZ200

Grossissement 6,7x à 45x

Inclinée 45° WD : 100 mm

Avec oculaires 10/20 en standard


Oculaires en option ; 10x, 15x, 20x,
25x et 30x

Réglage ± 5 sur chaque porte oculaire

Objectif auxiliaires 0,3x, 0,5x, 0,75x,
1,5x, 2x

Option trinoculaire



	Références	
	CFM-301101	Binoculaire
	CFM-301201	Trinoculaire



**SZ200**

Grossissement 7x à 30x

Inclinée 45° WD : 97 mm

Avec oculaires 10/20 en standard

Oculaires en option ; 10x, 20x

Réglage +5-8 sur chaque porte oculaire

Objectif auxiliaires 0,5x, 2x

Option trinoculaire

**Références**

CFM701101

Binoculaire

CFM701202

Trinoculaire





CMF-XTL7045

Grossissement 7x à 45x

Inclinée 45° WD : 100 mm Oculaires 10/20

Oculaires en option ; 10x, 15x, 20x, 25x et 30x

Réglage +/- 5 sur chaque porte oculaire

Objectifs auxiliaires 0,3x, 0,5x, 0,75x,



1,5x, 2x

Option

trinoculaire

XTL7045T2



	Références	
	CFM-7045B1	Binoculaire
	CFM-7045B2	Binoculaire
	CFM-7045T1	Trinoculaire
	CFM-7045T2	Trinoculaire





Références	
WF100002	Oculaire 10/20
WF10M/20	Oculaire micrométrique 10/20
WF010001	Oculaire 15/15
WF020001	Oculaire 20/10
	Coupleur 0,3x Monture C
MONT0002	Coupleur 0,5x Monture C
	Coupleur 0,3x Monture C
MONT0002	Coupleur 0,5x Monture C
OBJE0009	Objectif additionnel 0,5x WD : 165 mm
OBJE0003	Objectif additionnel 1,5X WD : 45 mm
OBJE0002	Objectif additionnel 2X WD : 30 mm
BAGU0001	Bague de fixation annulaire /7045/SZX51/61
CFM-POL7045	Kit de polarisation (filtre et platine tournante)



**SZ 680**

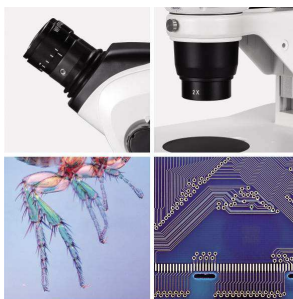
Grossissement 6,8x à 47x

Oculaires 10/23

SZ 780

Grossissement 6,6x à 51x

Oculaires 10/24



Références	
SZ680B1	Binoculaire 6,8x à 47x
SZ680B2	Binoculaire LED 6,8x à 47x
SZ680T1	Trinoculaire 6,8x à 47x
SZ680T2	Trinoculaire LED 6,8x à 47x

Références	
SZ780B1	Binoculaire 6,6x à 51x
SZ780B2	Binoculaire LED 6,6x à 51x
SZ780T1	Trinoculaire 6,6x à 51x
SZ780T2	Trinoculaire LED 6,6x à 51x



Série modulaire SZ6

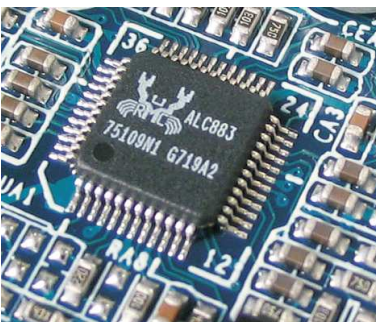


Références	Corps et têtes
CFM01101	SZ6060 Corps de Zoom 0,8-5X
CFM01102	SZ6080 Corps de Zoom 0,8-6,5X
CFM01103	SZ6100 Corps de Zoom 0,8-8X
CFM02101	Tube binoculaire standard
CFM02102	Tube binoculaire Ergonomique inclinai- son variable
Références	Objectifs et oculaires
CFM04101	Objectif Plan 1X N.A. 0.09
CFM04102	Objectif Plan 0,3X N.A. 0.03
CFM04103	Objectif Plan Apo 0,5X N.A. 0.05
CFM04104	Objectif Plan 2X N.A. 0.2
CFM03101	Oculaire Réglable 10 X/24



MonoZoom





Macro Zoom 18-108



CFM201201 76mm TRACK STAND

- Scope Holder I.D.: 76mm
- Travel Distance: 117mm
- Base Dimensions: 228 × 178 × 22mm
- Black and White Plate Size: Dia.: 100mm; Thickness: 6mm.
- Applicable to SZ Series Stereo Microscope

**CFM202201 76mm TRACK STAND**

- Scope Holder I.D.: 76mm
- Travel Distance: 105mm
- Base Dimensions: 280 × 240 × 25mm
- Black and White Plate Size: Dia.: 140mm; Thickness: 6mm.
- Track Stand applicable to S2Z/S2S Series Stereo Microscope
- Track Stand applicable to S2Z/S2S Series Stereo Microscope, with ESD Safe
- Track Stand applicable to S2Z/S2S Series Stereo Microscope

**CFM203101 76mm POST STAND**

- Scope Holder I.D.: 76mm
- Max. Size from Vertical Post to the Front of the Base: 205mm
- Base Dimensions: 252 × 200 × 24mm
- Black and White Plate Size: Dia.: 95mm; Thickness: 5mm.
- Applicable to SZ and FS Series Stereo Microscopes

**CFM204111 LED DUAL ILLUMINATED TRACK STAND**

- Scope Holder I.D.: 76mm
- Travel Distance: 100mm
- Base Dimensions: 285 × 240 × 40mm
- Height: 340mm
- Size of the Black and White Plate: Dia.: 100mm; Thickness: 5mm
- Size of the Clear Glass Plate: Dia.: 100mm, Thickness: 2mm
- Power Supply: AC 100-240V 50/60 Hz
- Illumination: LED Light
- Applicable to SZ/PZ2/FS Series Stereo Microscopes



Picture Preview	P/N	Name	Description
	CFM201201	76mm Track Stand	76mm scope holder, travel distance 117mm. The base size is 228 × 178 × 22mm, with a 100 × 6mm Black and White Plate, applicable to SZ Series microscope.
	CFM201911	Transmitted Mirror Base (Halogen Light Adapter)	Used with 201201 76mm Track Stand, with a MA201923 Clear Glass Plate. It has a built-in 70mm mirror, with adjustable angle. The adapter is for 351101 Halogen Light use only.
	CFM201921	100mm Black and White Plate	Matte Finish Plastic Plate, Dia. 100mm, 6mm thickness, for 201201 76mm track stand
	CFM201922	100mm Matte Finish Glass Plate	Matte Finish Glass Plate, Dia. 100mm, 6mm thickness, for 201201 76mm track stand
	CFM201923	100mm Clear Glass Plate	Clear glass, Dia. 100mm, thickness 6mm, for 201201 76mm track stand.
	CFM201931	Fiber Adapter	Internal dia. of fiber tube: 15.1mm; Max. Outside dia.: 48mm; Minimum Outside dia.: 22mm; Total length: 85mm.
	CFM202201	76mm Track Stand	76mm scope holder, 105mm travel distance. The base size is 280 × 240 × 25mm, with a 140 × 6mm plate, applicable to S2Z/S2S Series Stereo Microscopes.
	CFM202202	76mm Track Stand	CFM202201 76mm Track Stand with ESD Safe
	CFM202203	76mm Track Stand	76mm scope holder, 105mm travel distance. The base size is 280 × 240 × 25mm, with a 140 × 6mm plate, applicable to S2Z/S2S Series Stereo Microscopes.
	CFM202921	140mm Black And White Plate	Matte Finish Plastic Plate, Dia. 140mm, 6.5mm thickness
	CFM202923	140mm Clear Glass Plate	Clear Glass Plate, Dia. 140mm, 6.5mm thickness
	CFM203101	76mm Post Stand	76mm scope holder. Max. size from the vertical post to the front of base is 205mm with square base. The base size is 252 × 200 × 24mm, with a 95 × 5mm Black and White Plate and applicable to SZ and FS Series microscopes.
	CFM204111	LED Dual Illuminated Light Track Stand	76mm scope holder. Travel distance: 100mm; Size of the base: 285 × 240 × 40mm; Vertical Length: 340mm; Power Supply: AC 100-240V 50/60 Hz; Illumination: LED light; Applicable to SZ, S2S and FS Series microscopes.
	CFM204911	100mm Black and White Plate	Size of the Black and White Plate: Dia. 100mm, thickness 5mm.
	CFM204912	100mm Clear Glass Plate	Size of the Clear Glass Plate: Dia. 100mm, thickness 2mm.

POST STAND



CFM211101 76mm POST STAND
 ◊ 76mm Scope Holder
 ◊ Weight: 6.6lbs (3kg)
 ◊ Size of the Base: 12.6"× 12.01"× 0.63" (320× 305× 16mm)
 ◊ Max. Size from vertical post to the front of base: 10.75" (273mm)
 ◊ Vertical Post: diameter 1.26" (32mm), height 12.01" (305mm)
 ◊ Extension Post: 5.9" (150mm)
 ◊ 95× 5mm Black and White Plate
 ◊ Applicable to all of the 76mm Body Series Microscopes



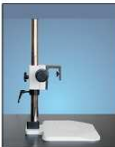
CFM212111 76mm HF DUAL ILLUMINATED POST STAND
 ◊ 76mm Scope Holder
 ◊ Weight: 11.24lbs (5.1kg)
 ◊ Size of the Base: 12.6"× 12.01"× 2.36" (320× 305× 60mm)
 ◊ Power Supply: AC 85-265V 50/60Hz
 ◊ Top Lighting: 12V 15W halogen bulb
 ◊ Bottom Lighting: 9W 2U fluorescent lamp
 ◊ Max. Size from vertical post to the front of base: 10.75" (273mm)
 ◊ Vertical Post: diameter 1.26" (32mm), height 12.01" (305mm)
 ◊ 95× 5mm Glass Plate
 ◊ Applicable to all of the 76mm Body Series Microscopes



CFM211103 39mm POST STAND
 ◊ 39mm Scope Holder
 ◊ Weight: 6.6lbs (3kg)
 ◊ Size of the Base: 12.6"× 12.01"× 0.63" (320× 305× 16mm)
 ◊ Max. Size from vertical post to the front of base: 10.75" (273mm)
 ◊ Vertical Post: diameter 1.26" (32mm), height 12.01" (305mm)
 ◊ Extension Post: 5.9" (150mm)
 ◊ 95× 5mm Black and White Plate
 ◊ Applicable to MZ Series Microscope



CFM214111 76mm HH DUAL ILLUMINATED POST STAND
 ◊ 76mm Scope Holder
 ◊ Weight: 11.24lbs (5.1kg)
 ◊ Size of the Base: 12.6"× 12.01"× 2.36" (320× 305× 60mm)
 ◊ Power Supply: AC 85-265V 50/60Hz
 ◊ Top Lighting: 12V 15W halogen bulb
 ◊ Bottom Lighting: 12V 15W halogen bulb
 ◊ Max. Size from vertical post to the front of base: 10.75" (273mm)
 ◊ Vertical Post: diameter 1.26" (32mm), height 12.01" (305mm)
 ◊ 95× 5mm Glass Plate
 ◊ Applicable to all of the 76mm Body Series Microscopes



CFM211108 N ADAPTER POST STAND
 ◊ N Type Adapter
 ◊ Weight: 6.6lbs (3kg)
 ◊ Size of the Base: 12.6"× 12.01"× 0.63" (320× 305× 16mm)
 ◊ Max. Size from vertical post to the front of base: 10.75" (273mm)
 ◊ Vertical Post: diameter 1.26" (32mm), height 12.01" (305mm)
 ◊ Extension Post: 5.9" (150mm)
 ◊ 95× 5mm Black and White Plate
 ◊ Applicable to all of the CCD Camera



CFM228101 Transmitted Mirror Base (Fiber Optic Cable Adapter)



CFM228102 HH Dual Illuminated Base



CFM228106 HF Dual Illuminated Base

Picture Preview	P/N	Name	Description
	CFM211101	76mm Post Stand	76mm scope holder, Max. size from vertical post to the front of base is 10.75"(273mm). Vertical post diameter 1.26"(32mm), vertical post height 12" (305mm). The base size is 320× 305× 16mm, with a 95× 5mm Black and White Plate, applicable to all of the 76mm Body Series Microscopes.
	CFM211103	39mm Post Stand	39mm scope holder, Max. size from vertical post to the front of base is 10.75"(273mm). Vertical post diameter 1.26"(32mm), vertical post height 12" (305mm). The base size is 320× 305× 16mm, with a 95× 5mm Black and White Plate, applicable to MZ Series Microscope.
	CFM211108	N Adapter Post Stand	N Type Adapter, Max. size from vertical post to the front of base is 10.75"(273mm). Vertical post diameter 1.26"(32mm), vertical post height 12" (305mm). The base size is 320× 305× 16mm, with a 95× 5mm Black and White Plate, applicable to all of the CCD Cameras.
	CFM212111	76mm HF Dual Illuminated Post Stand	76mm scope holder, 12V 15W halogen bulb for top lighting, 9W 2U fluorescent lamp for bottom lighting. AC 85-265V 50/60Hz. Max. size from vertical post to the front of base is 10.75"(273mm). Vertical post diameter 1.26"(32mm), vertical post height 12" (305mm). The base size is 320× 305× 60mm, with a 95× 5mm Glass Plate, applicable to all of the 76mm Body Series Microscopes.
	CFM214111	76mm HH Dual Illuminated Post Stand	76mm scope holder, 12V 15W halogen bulb for top lighting and bottom lighting. AC 85-265V 50/60Hz. Max. size from vertical post to the front of base is 10.75"(273mm). Vertical post diameter 1.26"(32mm), vertical post height 12" (305mm). The base size is 320× 305× 60mm, with a 95× 5mm Glass Plate, applicable to all of the 76mm Body Series Microscopes.
	CFM228101	Transmitted Mirror Base (Fiber Optic Cable Adapter)	Used with 211101 Post Stand and 76mm 221101 Track Stand, including 229103 Clear Glass Plate and 223201 Ins. It has a built-in 70mm mirror, and the angle is adjustable. The adapter is for connect the Fiber Optic Cable (323203 Single Pipe Light Guide) and Illuminator .
	CFM228102	HH Dual Illuminated Base	For 211101 Post Stand and 76mm 221101 76mm Track Stand, with 229103 Clear Glass Plate and 223201 Ins. It has a built-in mirror, and the angle is adjustable. Brightness of halogen light is adjustable. Power Supply: AC90-240V 50/60Hz. The top lighting is halogen light, Voltage of halogen light 12V 15W.
	CFM228106	HF Dual Illuminated Base	For 211101 Post Stand and 76mm 221101 Track Stand, including 229102 Matte Finish Glass Plate and 223201 Ins. It has a built-in fluorescent light with adjustable brightness. Power Supply: AC 90-240V 50/60Hz. The top lighting is halogen light, Voltage of halogen light: 12V 15W.

TRACK STAND**CFM221101 76mm TRACK STAND**

- ◊ 76mm Scope Holder
- ◊ Weight: 6.6lbs (3kg)
- ◊ Size of the Base: 12.6 × 12.01 × 0.63" (320 × 305 × 16mm)
- ◊ Travel Distance: 250mm
- ◊ Vertical Length: 325mm
- ◊ 95 × 5mm Black and White Plate
- ◊ Applicable to all of the 76mm Body Series Microscopes

**CFM221103 39mm TRACK STAND**

- ◊ 39mm Scope Holder
- ◊ Weight: 6.6lbs (3kg)
- ◊ Size of the Base: 12.6 × 12.01 × 0.63" (320 × 305 × 16mm)
- ◊ Travel Distance: 250mm
- ◊ Vertical Length: 325mm
- ◊ 95 × 5mm Black and White Plate
- ◊ Applicable to MZ Series Microscope

**MA221 B&L TRACK STAND**

- ◊ B&L Scope Holder
- ◊ Weight: 6.6lbs (3kg)
- ◊ Size of the Base: 12.6 × 12.01 × 0.63" (320 × 305 × 16mm)
- ◊ Travel Distance: 250mm
- ◊ Vertical Length: 325mm
- ◊ 95 × 5mm Black and White Plate
- ◊ Applicable to B&L Series Microscope

**CFM221108 N ADAPTER TRACK STAND**

- ◊ N Type Adapter
- ◊ Weight: 6.6lbs (3kg)
- ◊ Size of the Base: 12.6 × 12.01 × 0.63" (320 × 305 × 16mm)
- ◊ Travel Distance: 250mm
- ◊ Vertical Length: 325mm
- ◊ 95 × 5mm Black and White Plate
- ◊ Applicable to attach CCD camera with 1/4-20" standard screw

**CFM221201 76mm FINE FOCUS TRACK STAND**

- ◊ 76mm Scope Holder
- ◊ Weight: 6.6lbs (3kg)
- ◊ Size of the Base: 12.6 × 12.01 × 0.63" (320 × 305 × 16mm)
- ◊ Travel Distance: 250mm
- ◊ Vertical Length: 325mm
- ◊ Coaxial Focus: 23mm /circle
- ◊ Fine Focus: 0.56mm /circle
- ◊ 95 × 5mm Black and White Plate
- ◊ Applicable to all of the 76mm Body Series Microscopes

**CFM222111 76mm HF DUAL ILLUMINATED TRACK STAND**

- ◊ 76mm Scope Holder
- ◊ Weight: 11.24lbs (5.1kg)
- ◊ Size of the Base: 12.6 × 12.01 × 2.36" (320 × 305 × 60mm)
- ◊ Travel Distance: 250mm
- ◊ Vertical Length: 325mm
- ◊ Power Supply: AC 85-265V 50/60Hz
- ◊ Top Lighting: 12V 15W halogen bulb
- ◊ Bottom Lighting: 3W 2U fluorescent lamp
- ◊ 95 × 5mm Glass Plate
- ◊ Applicable to all of the 76mm Body Series Microscopes

**CFM224111 76mm HH DUAL ILLUMINATED TRACK STAND**

- ◊ 76mm Scope Holder
- ◊ Weight: 11.24lbs (5.1kg)
- ◊ Size of the Base: 12.6 × 12.01 × 2.36" (320 × 305 × 60mm)
- ◊ Travel Distance: 250mm
- ◊ Vertical Length: 325mm
- ◊ Power Supply: AC 85-265V 50/60Hz
- ◊ Top Lighting: 12V 15W halogen bulb
- ◊ Bottom Lighting: 12V 15W halogen bulb
- ◊ 95 × 5mm Glass Plate
- ◊ Applicable to all of the 76mm Body Series Microscopes

**MA225101 76mm HIGH TRACK STAND**
















- ◊ 76mm Scope Holder
- ◊ Weight: 8.82lbs (4kg)
- ◊ Size of the Base: 12.6 × 12.01 × 0.63" (320 × 305 × 16mm)
- ◊ Travel Distance: 460mm
- ◊ Vertical Length: 500mm
- ◊ 95 × 5mm Black and White Plate
- ◊ Applicable to all of the 76mm Body Series Microscopes

**CFM225103 39mm HIGH TRACK STAND**

- ◊ 39mm Scope Holder
- ◊ Weight: 8.82lbs (4kg)
- ◊ Size of the Base: 12.6 × 12.01 × 0.63" (320 × 305 × 16mm)
- ◊ Travel Distance: 460mm
- ◊ Vertical Length: 500mm
- ◊ 95 × 5mm Black and White Plate
- ◊ Applicable to MZ Series Microscope

**CFM225905 SAFETY CLAMP**

- ◊ Can protect stage and microscope effectively in the course of adjusting.
- ◊ Opening Size: 31mm

Picture Preview	P/N	Name	Description
	CFM221101	76mm Track Stand	76mm scope holder, travel distance 250mm, vertical length 325mm. The base size is 320×305×16mm, with a 95×5mm Black and White Plate, applicable to all of the 76mm Body Series Microscopes.
	CFM221103	39mm Track Stand	39mm scope holder, travel distance 250mm, vertical length 325mm. The base size is 320×305×16mm, with a 95×5mm Black and White Plate, applicable to all of the 76mm Body Series Microscopes.
	CFM221106	B&L Track Stand	B&L scope holder, travel distance 250mm, vertical length 325mm. The base size is 320×305×16mm, with a 95×5mm Black and White Plate, applicable to B&L Series Microscope.
	CFM221108	N Adapter Track Stand	N-Type to attach CCD camera with 1/4-20" standard screw, travel distance 250mm, vertical length 325mm. The base size is 320×305×16mm, with a 95×5mm Black and White Plate.
	CFM221201	76mm Fine Focus Track Stand	76mm scope holder, coaxial focus 23mm/circle, fine focus 0.56mm/circle, travel distance 250mm, vertical length 325mm. The base size is 320×305×16mm, with a 95×5mm Black and White Plate, applicable to all of the 76mm Body Series Microscopes.
	CFM222111	76mm HF Dual Illuminated Track Stand	76mm scope holder; 12V 15W halogen bulb for top lighting, 9W 2U fluorescent lamp for bottom lighting, AC 85-265V 50/60Hz. Travel distance 250mm, vertical length 325mm. The base size is 320×305×60mm, with a 95×5mm Glass Plate, applicable to all of the 76mm Body Series Microscopes.
	CFM224111	76mm HH Dual Illuminated Track Stand	76mm scope holder; 12V 15W halogen bulb for top and bottom lighting, AC 85-265V 50/60Hz Adjustable Mirror, Travel Distance: 250mm, Vertical Length: 325mm. The base size is 320×305×60mm, with a 95×5mm Glass Plate, applicable to all of the 76mm Body Series Microscopes.
	CFM225101	76mm High Track Stand	76mm scope holder, vertical length 500mm, Travel distance 460mm; The base size is 320×305×16mm, with a 95×5mm Black and White Plate, applicable to all of the 76mm Body Series Microscopes.
	CFM225103	39mm High Track Stand	High Track Stand with 39mm Scope holder
	CFM225108	N-Type High Track Stand	High Track Stand with N-Type Adapter
	CFM225201	76mm Fine Focus High Track Stand	76mm scope holder, vertical length 500mm, Travel distance 460mm, coaxial focus 23mm/circle, fine focus 0.56mm/circle. The base size is 320×305×16mm, with a 95×5mm Black and White Plate, applicable to all of the 76mm dia. Body Series Microscopes.
	CFM229101	95mm Black And White Matte Finish Plate	
	CFM229102	95mm Matte Finish Glass Plate	
	CFM229103	95mm Clear Glass Plate	
	CFM229201	Transmitted Illumination Iris	

TRACK STAND**CFM221101 76mm TRACK STAND**

- ◊ 76mm Scope Holder
- ◊ Weight: 6.6lbs (3kg)
- ◊ Size of the Base: 12.6×12.01×0.63" (320×305×16mm)
- ◊ Travel Distance: 250mm
- ◊ Vertical Length: 325mm
- ◊ 95×5mm Black and White Plate
- ◊ Applicable to all of the 76mm Body Series Microscopes

**CFM221103 39mm TRACK STAND**

- ◊ 39mm Scope Holder
- ◊ Weight: 6.6lbs (3kg)
- ◊ Size of the Base: 12.6×12.01×0.63" (320×305×16mm)
- ◊ Travel Distance: 250mm
- ◊ Vertical Length: 325mm
- ◊ 95×5mm Black and White Plate
- ◊ Applicable to MZ Series Microscope

**CFM221106 B&L TRACK STAND**

- ◊ B&L Scope Holder
- ◊ Weight: 6.6lbs (3kg)
- ◊ Size of the Base: 12.6×12.01×0.63" (320×305×16mm)
- ◊ Travel Distance: 250mm
- ◊ Vertical Length: 325mm
- ◊ 95×5mm Black and White Plate
- ◊ Applicable to B&L Series Microscope

**CFM221108 N ADAPTER TRACK STAND**

- ◊ N Type Adapter
- ◊ Weight: 6.6lbs (3kg)
- ◊ Size of the Base: 12.6×12.01×0.63" (320×305×16mm)
- ◊ Travel Distance: 250mm
- ◊ Vertical Length: 325mm
- ◊ 95×5mm Black and White Plate
- ◊ Applicable to attach CCD camera with 1/4"-20" standard screw

**CFM221201 76mm FINE FOCUS TRACK STAND**

- ◊ 76mm Scope Holder
- ◊ Weight: 6.6lbs (3kg)
- ◊ Size of the Base: 12.6×12.01×0.63" (320×305×16mm)
- ◊ Travel Distance: 250mm
- ◊ Vertical Length: 325mm
- ◊ Coaxial Focus: 23mm /circle
- ◊ Fine Focus: 0.56mm /circle
- ◊ 95×5mm Black and White Plate
- ◊ Applicable to all of the 76mm Body Series Microscopes

**CFM222111 76mm HF DUAL ILLUMINATED TRACK STAND**

- ◊ 76mm Scope Holder
- ◊ Weight: 11.24lbs (5.1kg)
- ◊ Size of the Base: 12.6×12.01×2.36" (320×305×60mm)
- ◊ Travel Distance: 250mm
- ◊ Vertical Length: 325mm
- ◊ Power Supply: AC 85-265V 50/60Hz
- ◊ Top Lighting: 12V 15W halogen bulb
- ◊ Bottom Lighting: 9W ZU fluorescent lamp
- ◊ 95×5mm Glass Plate
- ◊ Applicable to all of the 76mm Body Series Microscopes

**CFM224111 76mm HH DUAL ILLUMINATED TRACK STAND**

- ◊ 76mm Scope Holder
- ◊ Weight: 11.24lbs (5.1kg)
- ◊ Size of the Base: 12.6×12.01×2.36" (320×305×60mm)
- ◊ Travel Distance: 250mm
- ◊ Vertical Length: 325mm
- ◊ Power Supply: AC 85-265V 50/60Hz
- ◊ Top Lighting: 12V 15W halogen bulb
- ◊ Bottom Lighting: 12V 15W halogen bulb
- ◊ 95×5mm Glass Plate
- ◊ Applicable to all of the 76mm Body Series Microscopes

**CFM225101 76mm HIGH TRACK STAND**

- ◊ 76mm Scope Holder
- ◊ Weight: 8.82lbs (4kg)
- ◊ Size of the Base: 12.6×12.01×0.63" (320×305×16mm)
- ◊ Travel Distance: 460mm
- ◊ Vertical Length: 500mm
- ◊ 95×5mm Black and White Plate
- ◊ Applicable to all of the 76mm Body Series Microscopes

**CFM225103 39mm HIGH TRACK STAND**

- ◊ 39mm Scope Holder
- ◊ Weight: 8.82lbs (4kg)
- ◊ Size of the Base: 12.6×12.01×0.63" (320×305×16mm)
- ◊ Travel Distance: 460mm
- ◊ Vertical Length: 500mm
- ◊ 95×5mm Black and White Plate
- ◊ Applicable to MZ Series Microscope

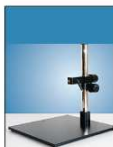
**CFM225905 SAFETY CLAMP**

- ◊ Can protect stage and microscope effectively in the course of adjusting.
- ◊ Opening Size: 31mm

BOOM STAND

**CFM231101 BOOM STAND**

- ◊ Weight: 39.57lbs (17.5kg)
- ◊ Size of the Base: 11.22(L)×10.236(W)×0.709(H)" (285×260×18mm)
- ◊ Maximal Size from vertical post to the front of base: 9.38" (236.25mm)
- ◊ Horizontal Bar: 19" (483mm)
- ◊ Vertical Post: 15.1" (384mm)
- ◊ The Post Diameter: 1.465" (37.2mm)
- ◊ The Size can be extended up to 25" (634mm) with extension post
- ◊ Diameter of mounting holes in the front of horizontal bar: 5/8" (15.875mm)
- ◊ Maximal bearing load on the front of horizontal bar: 2 lbs (9.526kg)

**CFM231108 THREE HOLES BIG BASE BOOM STAND**

- ◊ Weight: 38.18lbs (40kg)
- ◊ Size of the Base: 15.512×14.96×0.472" (394×380×12mm)
- ◊ Vertical Post: 15.1" (384mm)
- ◊ The Post Diameter: 1.465" (37.2mm)
- ◊ With a CFM239403 Three Holes Adapter
- ◊ The adapter has 2 of 5/8"(15.875mm) holes, for connecting E-Arm

**CFM231102 CLAMP STAND**

- ◊ Weight: 22.49lbs (10.2kg)
- ◊ Maximum Opening Size of Clamp: 1.575"(40mm)
- ◊ Horizontal Bar: 19" (483mm)
- ◊ Vertical Post: 15.1" (384mm)
- ◊ The Post Diameter: 1.465" (37.2mm)
- ◊ Diameter of mounting holes in the front of horizontal bar: 5/8" (15.875mm)
- ◊ Maximal bearing load on the front of horizontal bar: 2 lbs (9.526kg)

**CFM237101 BIG BASE POST STAND**

- ◊ Base Size: 320×260×16mm
- ◊ Vertical Post Height: 280mm
- ◊ Vertical Post Diameter: 32mm
- ◊ Travel Distance in Vertical Direction: 42mm
- ◊ Dia. of Scope Holder: 50mm
- ◊ Center to Center Distances (From the center of post to the center of holder): 150mm

**CFM231104 U-TYPE BASE STAND**

- ◊ Weight: 38.03lbs (17.25kg)
- ◊ Size of the Base: 17.716×14.173×1.181" (450×360×30mm)
- ◊ Horizontal Bar: 19" (483mm)
- ◊ Vertical Post: 15.1" (384mm)
- ◊ The Post Diameter: 1.465" (37.2mm)
- ◊ Diameter of mounting holes in the front of horizontal bar: 5/8" (15.875mm)
- ◊ Maximal bearing load on the front of horizontal bar: 15lbs (6.8kg)

**CFM237102 HORIZONTAL BIG BASE STAND**

- ◊ Base Size: 380×260×30mm
- ◊ Dia. of Scope Holder: 50mm
- ◊ Travel Distance in Vertical Direction: 44mm
- ◊ Stage Size: 200×110mm
- ◊ Adjustable Travel of Stage: X: 70mm, Y: 30mm
- ◊ Weight: 7.4lbs (3.35kg)

**CFM231105 BIG BASE BOOM STAND**

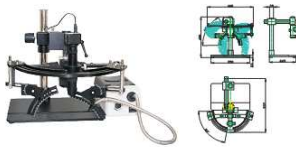
- ◊ Weight: 40.67lbs (18.45kg)
- ◊ Size of the Base: 15.512×14.96×0.472" (394×380×12mm)
- ◊ Horizontal Bar: 19" (483mm)
- ◊ Vertical Post: 15.1" (384mm)
- ◊ The Post Diameter: 1.465" (37.2mm)
- ◊ Diameter of mounting holes in the front of horizontal bar: 5/8" (15.875mm)
- ◊ Maximal bearing load on the front of horizontal bar: 28lbs (12.7kg)

**CFM239301 CENTER HOLE POST HEAVY BASE STAND**

- ◊ Weight: 88.18lbs (40kg)
- ◊ Size of the Base: 13"×13"×1.5" (330×330×38mm)
- ◊ Vertical Post: 15" (384mm)
- ◊ The Post Diameter: 1.465" (37.2mm)
- ◊ The size can be extended up to 25" (634mm) with extension post
- ◊ Maximal bearing load on the front of horizontal bar: 29lbs (11.34kg)
- ◊ The diameter of the hole for the flexible arm adapter is 22.2mm. Applicable to the flexible arm.

**CFM236101 MULTI-ANGLE LIGHTING HOLDER STAND**

- ◊ Dimensions: 537×460×406mm
- ◊ Dia. of Holder: 39mm
- ◊ Horizontal Adjusting Range of Angle: 80°
- ◊ Vertical Adjusting Range of Angle: 60°
- ◊ The stand can rotate freely for 360°



DUAL ARM BOOM STAND



CFM232101 DUAL ARM BOOM STAND

- ◇ Weight: 38.25lbs (17.35kg)
- ◇ Size of the Base: 11.22(L) × 10.236(W) × 0.709(H)" (285 × 260 × 18mm)
- ◇ Maximal Size from vertical post to the front of base: 9.38" (238.25mm)
- ◇ Horizontal Bar: 20.866" (530mm); Diameter: 0.787" (20mm)
- ◇ Vertical Post: 15.1" (384mm); Diameter: 1.465" (37.2mm)
- ◇ Diameter of mounting holes in the front of horizontal bar: 5/8" (15.875mm)
- ◇ Maximal bearing load on the front of horizontal bar: 21lbs (9.526kg)

CFM232102 DUAL ARM BOOM STAND WITH CLAMP

- ◇ Weight: 21.17lbs (9.6kg)
- ◇ Maximum Opening of Clamp: 1.575"(40mm)
- ◇ Maximal bearing load on the front of horizontal bar: 20lbs (9.072kg)

CFM232105 DUAL ARM BIG BASE STAND

- ◇ Weight: 41.78lbs (18.95kg)
- ◇ Size of the Base: 15.512 × 14.96 × 0.472" (394 × 380 × 12mm)
- ◇ Maximal bearing load on the front of horizontal bar: 31lbs (14.0616kg)

Picture Preview	P/N	Name	Description
	CFM231101	Boom Stand	39.5lbs Heavy Boom Stand, with a base size 285 × 260 × 18mm. The length of horizontal bar is 19"(483mm); Vertical post is 15"(384mm); The post diameter is 1.465"(37.2mm). Diameter of mounting holes in the front of horizontal bar is 5/8"(15.875mm). Maximum bearing load on the front of horizontal bar is 21lbs(9.5kg).
	CFM231102	Clamp Stand	22.49lbs Clamp Base Stand. Maximum opening of clamp is 1.575"(40mm). The length of horizontal bar is 19"(483mm); Vertical post is 15"(384mm). The post diameter is 1.465"(37.2mm). Diameter of mounting holes in the front of horizontal bar is 5/8"(15.875mm). Maximum bearing load on the front of horizontal bar is 21lbs(9.5kg).
	CFM231103	Heavy Base Stand	83.89lbs Heavy Boom Stand, with a base size 13 × 13 × 1.5"(330 × 330 × 38mm). The length of horizontal bar is 19"(483mm); Vertical post is 15"(384mm). The post diameter is 1.465"(37.2mm). Diameter of mounting holes in the front of horizontal bar is 5/8"(15.875mm).
	CFM231104	U-Type Base Stand	38.03lbs U-Type Base Stand, with a base size 450X360X30mm. The length of horizontal bar is 19"(483mm); Vertical post is 15"(384mm); The post diameter is 1.465"(37.2mm). Diameter of mounting holes in the front of horizontal bar is 5/8"(15.875mm). Maximum bearing load on the front of horizontal bar is 15 lbs(6.9kg).
	CFM231105	Big Base Boom Stand	40.67lbs Heavy Boom Stand, with a base size 394 × 380 × 12mm. The length of horizontal bar is 19"(483mm); Vertical post is 15"(384mm); The post diameter is 1.465"(37.2mm). Diameter of mounting holes in the front of horizontal bar is 5/8"(15.875mm). Maximum bearing load on the front of horizontal bar is 29lbs(12.7kg).
	CFM231108	Three Holes Big Base Boom Stand	88.18lbs Boom Stand, with a CFM239403 Three Holes Adapter. The base size is 394 × 380 × 12mm; Vertical post is 15"(384mm); The post diameter is 1.465"(37.2mm). The adapter has 2 of 5/8"(15.875mm) holes, for attaching to an E-Arm.
	CFM232101	Dual Arm Boom Stand	38.25lbs The base size is 285 × 260 × 18mm; The length of horizontal bar is 20.866"(530mm); The bar diameter is 0.787"(20mm). Vertical post is 15"(384mm); The post diameter is 1.465"(37.2mm). Diameter of mounting holes in the front of horizontal bar is 5/8"(15.875mm). Maximum bearing load on the front of horizontal bar is 21lbs(9.5kg).
	CFM232102	Dual Arm Boom Stand with Clamp	21.17lbs Maximum open size of clamp is 1.575"(40mm). The length of horizontal bar is 20.866"(530mm). The bar diameter is 0.787"(20mm). Vertical post is 15"(384mm). The post diameter is 1.465"(37.2mm). Diameter of mounting holes in the front of horizontal bar is 5/8"(15.875mm). Maximum bearing load on the front of horizontal bar is 20lbs(9.072kg).
	CFM232105	Dual Arm Big Base Stand	41.78lbs Big Base Stand, the base size is 394 × 380 × 12mm, the length of horizontal bar is 20.866"(530mm); The bar diameter is 0.787"(20mm). Vertical post is 15"(384mm). The post diameter is 1.465"(37.2mm). Diameter of mounting holes in the front of horizontal bar is 5/8"(15.875mm). Maximum bearing load on the front of horizontal bar is 31lbs(14.0616kg).
	CFM233302	Clamp Stand with Dual Holes Adapter	Maximum opening of clamp is 1.575"(40mm); Vertical post is 15"(384mm). The post diameter is 1.465"(37.2mm). The diameter of the post through hole for fitting vertical post is 38.4mm; The diameter of front hole adapter is 22.2mm.
	CFM236101	Multi-angle Lighting Holder Stand	Dimensions: 537 × 460 × 406mm; Dia. of holder: 39mm; Adjustable range of angle in the horizontal direction: 80°; Adjustable range of angle in the vertical direction: 60°; The Light holder of stand is rotatable for 360°.
	CFM237101	Big Base Post Stand	Base Size: 320 × 260 × 16mm; Vertical Post Height: 280mm; Vertical Post Diameter: 32mm; Travel Distance in vertical direction: 42mm; Dia. of Scope Holder: 50mm; Center to Center Distance (From the center of post to the center of holder): 150mm.
	CFM237102	Horizontal Big Base Stand	Base Size: 380 × 260 × 30mm; Dia. of Scope holder: 50mm; Travel distance in vertical direction: 44mm; Stage Size: 200 × 110mm; Adjustable Travel of stage: X-axis 70mm, Y-axis 30mm.

PNEUMATIC ARM

CFM241102 76mm Pneumatic Arm

- ◊ 76mm Scope Holder
- ◊ Revolution Degree: 360° free revolution in horizontal direction
- ◊ Weight: 13.89lbs (6.3kg)
- ◊ Size of Stand Clamp: 5.52" × 5.12" (140 × 130mm)
- ◊ Max. Open Size of Clamp: 9.38" (238.25mm)
- ◊ Length of Horizontal Arm: 9.85" (250mm)
- ◊ Length of Gradient Arm: 14.96" (380mm)
- ◊ Maximum Radius: 14.96" (380mm)
- ◊ Minimum Radius: 10.83" (275mm)
- ◊ Rising and Lowering Range in Vertical Direction: 21.46" (545mm)
- ◊ Max. Opening Angle in Vertical Direction: 6.7° (170mm)
- ◊ Max. Bearing Load on the Horizontal Arm: 11.82lbs (5.36kg)



CFM241104
39mm Pneumatic Arm



CFM241107
B&L Pneumatic Arm



CFM241108
Pneumatic Arm with
CCD Focusing Mount



CFM241109
Pneumatic Arm
with N Adapter



CFM241100
Pneumatic Arm with
LCD Monitor Adapter
(w/o Monitor)

Picture Preview	P/N	Name	Description
	CFM241100	Pneumatic Arm with LCD Monitor Adapter (w/o Monitor)	With a LCD Monitor Mounting Plate, 360° free revolution in horizontal direction. Max. Opening of clamp is 9.38"(238.25mm); Length of horizontal arm is 9.8"(250mm); Length of gradient arm is 15"(380mm); Maximum Radius: 15"(380mm); Minimum Radius: 10.83"(275mm).
	CFM241102	76mm Pneumatic Arm	76mm scope holder, 360° free revolution in horizontal direction. Max. Opening of clamp is 9.38" (238.25mm); Length of horizontal arm is 9.8"(250mm); Length of gradient arm is 15"(380mm); Maximum Radius: 15"(380mm); Minimum Radius: 10.83"(275mm); Weight: 13.89lbs(6.3kg).
	CFM241104	39mm Pneumatic Arm	39mm scope holder, 360° free revolution in horizontal direction. Max. Opening of clamp is 9.38" (238.25mm); Length of horizontal arm is 9.8"(250mm); Length of gradient arm is 15"(380mm); Maximum Radius: 15"(380mm); Minimum Radius: 10.83"(275mm).
	CFM241107	B&L Pneumatic Arm	B&L scope holder, 360° free revolution in horizontal direction. Max. Opening of clamp is 9.38" (238.25mm); Length of horizontal arm is 9.8"(250mm); Length of gradient arm is 15"(380mm); Maximum Radius: 15"(380mm); Minimum Radius: 10.83"(275mm).
	CFM241	Pneumatic Arm with CCD Focusing Mount	CCD Mounting Plate, 360° free revolution in horizontal direction. Max. Opening of clamp is 9.38" (238.25mm); Length of horizontal arm is 9.8"(250mm); Length of gradient arm is 15"(380mm); Maximum Radius: 15"(380mm); Minimum Radius: 10.83"(275mm).
	CFM241109	Pneumatic Arm with N Adapter	N Adapter, 360° free revolution in horizontal direction. Max. opening of clamp is 9.38"(238.25mm); Length of horizontal arm is 9.8"(250mm); Length of gradient arm is 15"(380mm); Maximum Radius: 15"(380mm); Minimum Radius: 10.83"(275mm).
	CFM241912	Wall Mount	Applicable to Pneumatic Arm, fixed on the wall with four screws. Size: 153 × 153mm; Dia. of the hole: 20.02mm.
	CFM241913	Table Mount	Applicable to Pneumatic Arm, fixed on the table with four screws. Size: 153 × 153mm; Dia. of the hole: 20.02mm.

MICROSCOPE STAND



FLEXIBLE ARM

CFM242101 FLEXIBLE ARM

- ◊ Weight: 12.70lbs (5.8kg)
- ◊ Size of Stand Clamp: 3.94 × 2.95 × 4.53" (100 × 75 × 115mm)
- ◊ Maximal Opening of Clamp: 1.575" (40mm)
- ◊ Length of Horizontal Arm: 13" (330mm)
- ◊ Length of Front Arm: 6.7" (170mm)
- ◊ Revolution Degree: 360° free revolution in horizontal direction
- ◊ Maximal Radius: 31.89" (810mm), Minimal Radius: 13" (330 mm)
- ◊ Raising and Lowering range in vertical direction: 19.685" (500mm)
- ◊ Maximal Opening Angle in vertical direction: 19.7" (500mm)
- ◊ Diameter of Mounting hole in the front of horizontal bar: 5/8" (15.875mm)
- ◊ Diameter of the mounting hole at the end of the base: 0.87" (22.2mm)
- ◊ Maximal bearing load on the front of horizontal bar: 21lbs (9.526kg)
- ◊ With a table clamp

CFM242201 FLEXIBLE ARM with CENTER HOLE HEAVY BASE STAND

◊ CFM242101 Flexible Arm (No Clamp) on the CFM239301 Center Hole Post Heavy Base Stand

CFM242301 FLEXIBLE ARM with CLAMP STAND

◊ CFM242101 Flexible Arm (No Clamp) on the CFM233302 Clamp Stand with Dual Holes Adapter

Picture Preview	P/N	Name	Description
	CFM242101	Flexible Arm	With a table clamp. Max. Opening size of clamp is 1.575"(40mm). 360° free revolution in horizontal direction. Diameter of mounting hole in the front of horizontal bar is 5/8"(15.875mm). Maximum bearing load on the front of horizontal bar is 21lbs(9.5kg). Weight:12.70lbs.
	CFM242201	Flexible Arm with Center Hole Heavy Base Stand	CFM242101 Flexible Arm (No Clamp) on the CFM239301 Center Hole Post Heavy Base Stand
	CFM242301	Flexible Arm with Clamp Stand	CFM242101 Flexible Arm (No Clamp) on the CFM233302 Clamp Stand with Dual Holes Adapter
	CFM242911	Clamp for Flexible Arm	Max. opening of clamp is 1.575"(40mm). The dimensions of the clamp: 102.20×76.05×114.68mm.
	CFM242912	Wall Mount	Applicable to Flexible Arm, fixed on the wall with four screws. Size: 153 × 153mm. Dia. of the hole: 22.2mm.
	CFM242913	Table Mount	Applicable to Flexible Arm, fixed on the table with four screws. Size: 153 × 153mm. Dia. of the hole: 22.2mm.



CFM243501 LONG FLEXIBLE ARM STAND

The Long Flexible Arm Stand has a large vertical travel adjustment, and the horizontal arm can extend freely. A microscope equipped onto CFM243501 Long Flexible Arm Stand can be rotated freely for 360° and can be used in an inclined observation. The power sockets on the base and horizontal arm can meet the requirements of using the multi-equipments. The truckle with locking functions can be moved or fastened freely.

Specifications

- ◊ Length of Horizontal Arm: 1400mm
- ◊ Weight of Horizontal Arm: 19kg
- ◊ Weight of Vertical Post: 100kg
- ◊ Weight of Base: 50kg
- ◊ Overall Height of the Unit: 1670mm
- ◊ Vertical Adjustment: 794mm
- ◊ Optional Accessories: CFM253101 32mm Arbor
- ◊ CFM252101 Through Hole Focus Rack and Fiber optic illuminator tray.



Picture Preview	P/N	Name	Description
	CFM243501	Long Flexible Arm Stand	360° free revolution in horizontal direction. Length of horizontal arm is 1400mm; Vertical post is 1670mm; Raising and lowering range in vertical direction is 794mm.

E-ARM

	CFM251101	CFM251301	CFM251401	CFM251501	CFM251601
Name	76mm E-Arm	39mm E-Arm	83mm E-Arm	85mm E-Arm	B&L E-Arm
Microscope holder	76mm	39mm	83mm	85mm	B&L
Rotatable mount dia.	5/8" (15.875mm)				
Vertical Focusing Adjustment	50mm				



Picture Preview	P/N	Name	Description
	CFM251101	76mm E-Arm	76mm holder, with 5/8" (15.875mm) end adapter, focusing distance in vertical direction: 50mm, for holding SZ Series Microscope.
	CFM251301	39mm E-Arm	39mm holder, with 5/8" (15.875mm) end adapter, focusing distance in vertical direction: 50mm, for holding MZ Series Microscope.
	CFM251401	83mm E-Arm	83mm holder, with 5/8" (15.875mm) end adapter, focusing distance in vertical direction: 50mm, for holding SZ Series Microscope.
	CFM251501	85mm E-Arm	85mm holder, with 5/8" (15.875mm) end adapter, focusing distance in vertical direction: 50mm, for holding SZ Series Microscope.
	CFM251601	B&L E-Arm	B&L Microscope holder, with 5/8" (15.875mm) end adapter, focusing distance in vertical direction: 50mm, for holding B&L series microscope.

INCLINABLE FOCUS DRIVE

	MA251111	MA251112	MA251115
Name	76mm Inclinable Focus Drive	39mm Inclinable Focus Drive	N-Type Inclinable Focus Drive
(whole) Length	270mm		
Mount Size	ø 16mm		
Rotatable Angle Range of Mount	0° - 180°		
Fixed Tightening Model	Manual		
Travel Distance	160mm		
Distance for One Manual Circle	23mm		
Rotatable Mount Dia.	5/8" (15.875mm)		
Net Weight	2.1kg		



Picture Preview	P/N	Name	Description
	CFM251111	76mm Inclinable Focus Drive	76mm scope holder, track length 270mm, travel distance 160mm. 180° rotatable, 5/8" mount.
	CFM251121	76mm Coarse Focus Inclinable Focus Drive	CFM251111 with Fine-Focus, coaxial coarse focus 23mm/circle, fine focus 0.56mm/circle.
	CFM251112	39mm Inclinable Focus Drive	39mm scope holder, track length 270mm, travel distance 160mm. 180° rotatable, 5/8" mount.
	CFM251122	39mm Coarse Focus Inclinable Focus Drive	CFM251112 with Fine-Focus, coaxial coarse focus 23mm/circle, fine focus 0.56mm/circle.
	CFM251115	N-Type Inclinable Focus Drive	N-Type holder, track length 270mm, travel distance 160mm. 180° rotatable, 5/8" mount.
	CFM251125	N-Type Coarse Focus Inclinable Focus Drive	CFM251115 with Fine-Focus, coaxial coarse focus 23mm/circle, fine focus 0.56mm/circle.

THROUGH HOLE FOCUS RACK

	CFM252101	CFM252103	CFM252104	CFM252105
Name	76/32mm Through Hole Focus Rack	39/32mm Through Hole Focus Rack	83/32mm Through Hole Focus Rack	85/32mm Through Hole Focus Rack
Microscope Holder	76mm	39mm	83mm	85mm
Dia. of Opening	32mm			
Vertical Focusing Adjustment	48mm			
Remarks	For post stand microscopes			



Picture Preview	P/N	Name	Description
	CFM252101	Through Hole Focus Rack	76mm holder, 32mm end hole adapter; Focusing distance in vertical direction: 48mm.
	CFM252103	Through Hole Focus Rack	39mm holder, 32mm end hole adapter; Focusing distance in vertical direction: 48mm.
	CFM252104	Through Hole Focus Rack	83mm holder, 32mm end hole adapter; Focusing distance in vertical direction: 48mm.
	CFM252105	Through Hole Focus Rack	85mm holder, 32mm end hole adapter; Focusing distance in vertical direction: 48mm.



ARBOR

Arbors are designed for extending working range of boom stands, and can meet microscope requirements of different direction and working distance.



	CFM253101	CFM253201	CFM253102	CFM253202
Name	Tiltable Arbor	Arbor	Tiltable Arbor	Arbor
Diameter of Arbor	32mm		25mm	
Length of Arbor	11"(280mm)		9.65" (245mm)	
Remarks	With a 5/8" (15.875mm) tilting end adapter	With a 5/8" (15.875mm) end adapter	With a 5/8" (15.875mm) tilting end adapter	With a 5/8" (15.875mm) end adapter

Picture Preview	P/N	Name	Description
	CFM253101	Tiltable Arbor	Dia. 32mm; With a 5/8"(15.875mm) tilting end adapter; Length of arbor: 11"(280mm).
	CFM253102	Tiltable Arbor	Dia. 25mm; With a 5/8"(15.875mm) tilting end adapter; Length of arbor: 9.65" (245mm).
	CFM253201	Arbor	Dia. 32mm; With a 5/8"(15.875mm) end adapter; Length of arbor: 11"(280mm).
	CFM253202	Arbor	Dia. 25mm; With a 5/8"(15.875mm) end adapter; Length of arbor: 9.65" (245mm).



MOUNTING PLATE



Picture Preview	P/N	Name	Description
	CFM254101	CCD Mounting Plate	5/8" Tiltting end adapter; One 1/4-20" standard screw is used to hold the CCD Camera.
	CFM254201	CCD Focus Mounting Plate	50mm Focus travel distance, 5/8" Tiltting end adapter; One 1/4-20" standard screw is used to hold the CCD Camera.
	CFM254202	N Type Mounting Plate	N-Type to attach CCD camera with 1/4-20" standard screw, 50mm focus travel distance, 5/8" tiltting end adapter.

CFM255101 LCD MONITOR HOLDER

This product is designed for 8" and 10" LCD Monitor. Maximum opening of holder is 35mm; Maximum length size of holder is 88mm; The upper angle control can rotate in multi-direction; The holder can attach the monitor to different stands.



Picture Preview	P/N	Name	Description
	CFM255101	LCD Monitor Holder	For attaching 8" and 10" LCD Monitor to the Boom Stand, Track Stand and Post Stand. The monitor can be fixed by rotating knob or M3×14 screws.

DONUT

	CFM256101	CFM256102	CFM256103	CFM256104
Name	32/76mm Donut	39/76mm Donut	45/76mm Donut	47/76mm Donut
Diameter of Donut (Within)	32mm	39mm	45mm	47mm
Remarks	Connects 76mm holder and I.D. 32mm Micro Zoom Lens	Connects 76mm holder and I.D. 39mm Micro Zoom Lens	Connects 76mm holder and 45mm Micro Zoom Lens body	Connects 76mm Holder and MZ501101 Macro Zoom Lens



Picture Preview	P/N	Name	Description
	CFM256101	32/76mm Donut	For connecting 76mm holder and I.D. 32mm Micro Zoom Lens
	CFM256102	39/76mm Donut	For connecting 76mm holder and I.D. 39mm Micro Zoom Lens
	CFM256103	45/76mm Donut	For connecting 76mm holder and 45mm Micro Zoom Lens body
	CFM256104	47/76mm Donut	For connecting 76mm Holder and MZ501101 Macro Zoom Lens
	CFM256105	76/76mm Stand Extension Adapter	Adds 56mm in height



ILLUMINATOR HOLDER

This Illuminator Holder can hold an illuminator very conveniently, save space and make observation more flexible.
For CFM311101, CFM311102, CFM312101 and CFM312102 Illuminators.



Picture Preview	P/N	Name	Description
	MA239101	Boom Stand Extension Post	The length is 10"(254mm); The post diameter is 1.465"(37.2mm). Fits Boom Stand, Clamp Stand and Heavy Base Stand.
	MA239401	Double Holes Adapter	The diameter for fitting vertical post is 38.4mm; The diameter of Pneumatic Arm adapter is 20mm.
	MA239402	Double Holes Adapter	The diameter for fitting vertical post is 38.4mm; The diameter of Flexible Arm adapter is 22.2mm.
	MA239403	Three Holes Adapter	Attaches to the Vertical Post of Boom Stand for holding an E-Arm
	MA239405	Fiber Optic Illuminator Holder	For holding MA311101/MA311102/MA312101/MA312102 Fiber Optic Illuminators
	MA239406	LED Power Supply Holder	For holding LED Power Supply

MANUAL INSPECTION STAGES



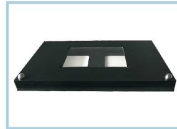
CFM261101 MANUAL STAGE
75×56mm travel, with 116×96mm back light window.
95mm adapter is for stand base.



CFM261201 MANUAL STAGE
Manual Stage, dimensions: 180×150mm, XY 90×60mm travel,
the clamp opening is from 25mm(10") to 37.2mm(15.1").



CFM262101 MANUAL INSPECTION STAGE
Manual Stage, dimensions: 440×290×36mm,
XY 300×250mm travel.



CFM262202 MANUAL INSPECTION STAGE
Manual Stage, dimensions: 380×230×36mm,
XY 200×200mm travel, with 19×14.5cm back light window.



Picture Preview	P/N	Name	Description
	CFM261101	Manual Stage	75×56mm travel, with 116×96mm back light window. 95mm adapter is for stand base.
	CFM261102	Rotating Manual Stage	Dimensions: 180×155×34mm; Working Size: 180×155×26mm; Travel Distance: 75×55mm; Dia. of Glass: 95mm (360° free revolution).
	CFM261201	Manual Stage	Manual Stage, dimensions 180×150mm, XY 90×60mm travel. The clamp opening is from 25mm(10") to 37.2mm(15.1").
	CFM262101	Manual Inspection Stage	Manual Stage, dimensions 440×290×36mm, XY 300×250mm travel.
	CFM262201	Manual Inspection Stage	Manual Stage, dimensions 440×290×36mm, XY 300×250mm travel, with 19×14.5cm back light window.
	CFM262102	Manual Inspection Stage	Manual Stage, dimensions 380×230×36mm, XY 300×200mm travel.
	CFM262202	Manual Inspection Stage	Manual Stage, dimensions 380×230×36mm, XY 200×200mm travel, with 19×14.5cm back light window.



CFM271101 PCB HOLDER
40mm height for holding PCB, PCB minimum size ≤5mm



Picture Preview	P/N	Name	Description
	CFM262301	ESD Safe Rubber Cover	400×290mm ESD Safe Rubber Cover, for CFM262101 and CFM262201 Manual Stage.
	CFM271101	PCB Holder	40mm height for holding PCB, PCB minimum size ≤5mm; 4 pcs for one set; For CFM262101 Manual Inspection Stage.

Genérateurs et Fibres Optiques



Halogen Light Source



LED Light Source



Filter



Double Fiber



Single Fiber



Ring Fiber

Eclairages

ILLUMINATION

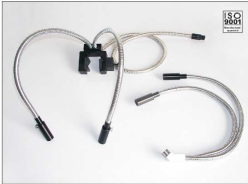
FIBER OPTIC LIGHT GUIDE

- ◊ Fiber Optic Material: Glass optical fiber
- ◊ Light Transmission Rate: T ≥ 50%/m
- ◊ Flexural Property: Min. bending radius ≥ 30D (D: Diameter of bushing)
- ◊ High Temperature Property: (1) 40 °C-150 °C, (2). special high temperature resistance ≥ 250 °C, instant high temperature resistance 400 °C
- ◊ Pressure Proof Property: 1 0.1MPa; Special 0.3MPa
- ◊ Diameter of Optic Fiber Guide: MZ series: 8mm;
Dual series: 7.1mm, SZ series: 10mm, Back light: 6.4mm
- ◊ Aperture in Numerical Value: ≥ 0.60
- ◊ Attenuation of Fiber: 300-600dB/km
- ◊ Intensity of Optical Fiber: > 150kg/mm
- ◊ Spectrum Transmission Range: 350-1300nm
- ◊ Tubing Material: SS, PVC (black)



ANNULAR RING LIGHT GUIDE

- ◊ 360° Shadow-Free, Cool, Uniform Illumination
- ◊ Accepts Polarizer Accessories
- ◊ PVC-Covered Metal Sheathing
- ◊ Black Anodized Aluminum Housing
- ◊ 70% Typical Illuminator Coupling Efficiency
- ◊ Glass Fibers with Ground & Polished End-Faces



DUAL PIPE LIGHT GUIDE

Two separate illuminator specific series are available, and they are not interchangeable. Longer light guides tend not to be self-supporting.



Picture Preview	P/N	Name	Description
	CFM321101	Annular Ring Light Guide	Ring's I.D.: 58mm; fiber dia.: 10mm, with PVC tubing at 1m in length, fitting most major brand microscopes. 5/8" standard adapter is for attaching to Fiber Optic Illuminator.
	CFM321301	Annular Ring Light Guide	Ring's I.D.: 34mm; fiber dia.: 8mm, with PVC tubing at 1m in length, fitting most major brand microscopes. 5/8" standard adapter is for attaching to Fiber Optic Illuminator.
	CFM321401	Annular Ring Light Guide	Ring's I.D.: 65mm; fiber dia.: 11mm, with PVC tubing at 1m in length, fitting most major brand microscopes. 5/8" standard adapter is for attaching to the Fiber Optic Illuminator.
	CFM322101	Dual Pipe Light Guide	Fiber Optic Goose Neck Dual Pipe with focusing lens, fiber dia.: 7.1mm; 18"(460mm) in length. 5/8" standard adapter is for attaching to the Fiber Optic Illuminator.
	CFM322102	Dual Pipe Light Guide	Fiber Optic Goose Neck Dual Pipe without focusing lens, fiber dia.: 7.1mm; 18"(460mm) in length. 5/8" standard adapter is for attaching to the Fiber Optic Illuminator.
	CFM322112	Dual Pipe Light Guide	Fiber Optic Goose Neck Dual Pipe without focusing lens, fiber dia.: 7.1mm; 800mm in length. 5/8" standard adapter is for attaching to the Fiber Optic Illuminator.
	CFM322121	Dual Pipe Light Guide	Fiber Optic Goose Neck Dual Pipe with focusing lens, fiber dia.: 1/4", 18"(460mm) in length. 5/8" standard adapter is for attaching to the Fiber Optic Illuminator.
	CFM322301	Dual Pipe Light Guide	Dual Pipe Light Guides. 510mm in length for soft cable, 910mm for Stay-Put gooseneck. 5/8" standard adapter for attaching to the Fiber Optic Illuminator.
	CFM322302	Dual Pipe Light Guide	Dual Pipe Light Guides, with a clamp to attach on track stand. The soft cable is 510mm in length, 910mm for Stay-Put gooseneck. 5/8" standard adapter for attaching to the Fiber Optic Illuminator.

SINGLE PIPE LIGHT GUIDE

Gooseneck design, can be adjusted with different angles for illumination, with big light flux.



BACK LIGHT GUIDE

LED Back Light Guide can be used under the glass window of the Manual Stage.



LINE LIGHT GUIDE

Fiber optic light guides provide intense and cold illumination in a small delivery package. Line light sources are perfect for a variety of applications from machine vision systems using line scan cameras to parts inspection.



Picture Preview	P/N	Name	Description
	CFM323101	Single Pipe Light Guide	With focusing lens, fiber dia.: 6mm; 18" (460mm) gooseneck. 5/8" standard adapter is for attaching the Fiber Optic Illuminator.
	CFM323201	Single Pipe Light Guide	Fiber Optic Cable: $\varnothing 6 \times 800\text{mm}$, with $\varnothing 9\text{mm}$ Adapter, for MZ Coaxial Illuminator, MA201912 and MA228101 Fiber Optic Mirror Bases.
	CFM324101	Back Light Guide	4" x 4" active area, 178 x 110 x 20mm dimension, fiber dia.: 10mm. 5/8" standard adapter is for attaching to the Fiber Optic Illuminator.
	CFM324102	Back Light Guide	2" x 2" active area, 86 x 52 x 16mm dimension, fiber dia. 6.5mm. 5/8" standard adapter is for attaching to the Fiber Optic Illuminator. Applicable to MA262201 Manual Inspection Stage.
	CFM325101	Line Light Guide	Fiber Optic Cable: $\varnothing 10\text{mm}$, output 1 x 71mm, 1m in Length, 5/8" standard adapter is for attaching to the Fiber Optic Illuminator.
	CFM325102	Line Light Guide	Fiber Optic Cable: $\varnothing 6\text{mm}$, output 1 x 38mm, 1m in Length, 5/8" standard adapter is for attaching to the Fiber Optic Illuminator.
	CFM325103	Line Light Guide	Fiber Optic Cable: $\varnothing 12\text{mm}$, output 1 x 253mm, 910mm in Length, 5/8" standard adapter is for attaching to the Fiber Optic Illuminator.

Statifs et accessoires

ILLUMINATION



CFM-LED-720 LED RING LIGHT with 4 AREA CONTROL

- ⊗ Power Supply: AC 90-240V, 50/60Hz
- ⊗ Max. Opening: 62mm
- ⊗ 72 LED Bulbs; Black Cover , Ring light is divided into 4 areas and each area is turned on and off separately.
- ⊗ Adjustable brightness



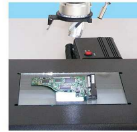
CFM344101 LED BACK LIGHT

- ⊗ Power Supply: AC 90-240V 50/60Hz
- ⊗ Output Voltage: DC 18-24V
- ⊗ Current: 0.5A Max.
- ⊗ Power Consumption: 6W Max.
- ⊗ Dimensions: 86 × 52 × 16mm
- ⊗ Active Area: 2 × 2" (50.8 × 50.8mm)
- ⊗ Adjustable brightness



CFM345101 LED POINT LIGHT

- ⊗ Power Supply: AC 90-240V 50/60Hz
- ⊗ Output Voltage: DC 18-24V
- ⊗ Current: 0.5A Max.
- ⊗ Power Consumption: 2W Max.
- ⊗ O.D.: 50mm
- ⊗ 2W spot light, adjustable brightness, plastic housing.
- ⊗ Designed for track stand and post stand



CFM345102 LED POINT LIGHT

- ⊗ Power Supply: AC 90-240V 50/60Hz
- ⊗ Output Voltage: DC 24V
- ⊗ 30 LED Bulbs: 2.5W spot light, adjustable brightness.
- ⊗ Designed for track stand and post stand



CFM345201 LED DUAL SPOTS LIGHT

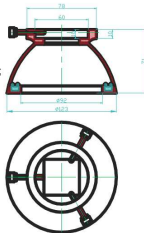
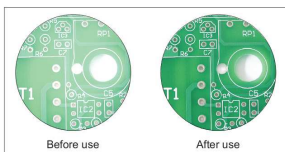
- ⊗ Power Supply: AC 90-240V 50/60Hz
- ⊗ Output Voltage: DC 24V
- ⊗ Power Consumption: 4W
- ⊗ Gooseneck Length: 240mm
- ⊗ Can be attached on track stand, post stand and boom stand.
The clamp opening is from 25mm (1") to 37.2mm (1.51").



CFM347101 LED DIFFUSE ILLUMINATOR

The product features excellence of low power consumption, low heat, long service life, small size and adjustable brightness. It has 48 LED bulbs with four switches to control 8 LED areas for choosing different illumination angles.

- ◊ Power Supply: AC 100V-240V, 50/60Hz
- ◊ Maximum Power Consumption: 5W
- ◊ Output: DC 24V
- ◊ Brightness Range: 0-100%
- ◊ Current Range: 0-180mA
- ◊ Environment Temperature/ Humidity: 0-40 °C/20-80%RH
- ◊ Dimensions: the top mount Φ (outer)78mm \times Φ (inner)60mm;
- ◊ The top caliber of light flux Φ 40mm;
- ◊ The bottom mount Φ (outer)123mm \times Φ (inner)92mm
- ◊ Service Life: 20000 hours



ILLUMINATION





SAS COFEMO

68 rue Charles Gounod
13480 CABRIES
FRANCE

Téléphone :+33 442 69 11 12
Télécopie :+33 442 69 11 38
Messagerie : contact@cofemo.fr

